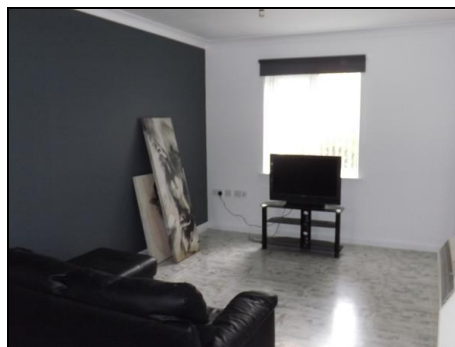




94 Walnut Close, Basildon

£ 184,995



- Fitted Kitchen
- Double Glazing
- New flooring
- Recently decorated
- Potential Buy to Let
- Ideal for First time buyers
- Allocated parking space
- Long lease

IMPORTANT NOTE TO PURCHASERS: xpert agents endeavour to make sales particulars as accurate and reliable as possible, however, they do not constitute or form part of an offer or any contract and none is to be relied upon as statements of representation or fact. Any services, systems and appliances listed in this specification have not been tested by xpert agents and no guarantee as to their operating ability or efficiency is given. All measurements have been taken as a guide to prospective buyers only, and are not precise. Please be advised that some of the particulars may be awaiting vendor approval. If you require clarification or further information on any points, please contact us, especially if you are travelling some distance to view. Fixtures and fittings other than those mentioned are to be agreed with the seller.

A recently decorated 2 bedroom modern ground floor flat with an allocated parking space in this popular development located in Steeple View. The property boasts a lounge/dining room, modern kitchen and bathroom, double glazing, electric heating and new floors throughout. There is no onward chain. IDEAL FOR FIRST PURCHASE

Entrance Hall

Door to Hallway, entry phone, power point, laminate floor

Lounge/Diner 20'6" X 10'

Double glazed windows to both rear and front aspect, wall mounted heater, TV point, power points, laminate floor.

Kitchen 7'7" X 6'3"

Double glazed window. Range of eye and base level cupboards, black laminate work top surface, Stainless steel sink and drainer with mixer tap, integrated electric oven with separate electric hob and extractor, Washing machine, ample power points

Bedroom 1 10'11" X 9'

Double glazed window, wall mounted heater, TV point, power points, laminate floor.

Bedroom 2 11'8" X 6'8"

Double glazed window, wall mounted heater, TV point, power points, laminate floor.

Bathroom/WC

Panelled bath, shower screen and electric shower. Low flush WC, pedestal hand wash basin. Half tiled walls with fully tiled to bath area. Wall mounted heater, extractor fan. Cupboard with shelving housing hot water tank.

Energy Performance Certificate

