



**BEDFORDBURY, COVENT GARDEN**

**£1,050,000**



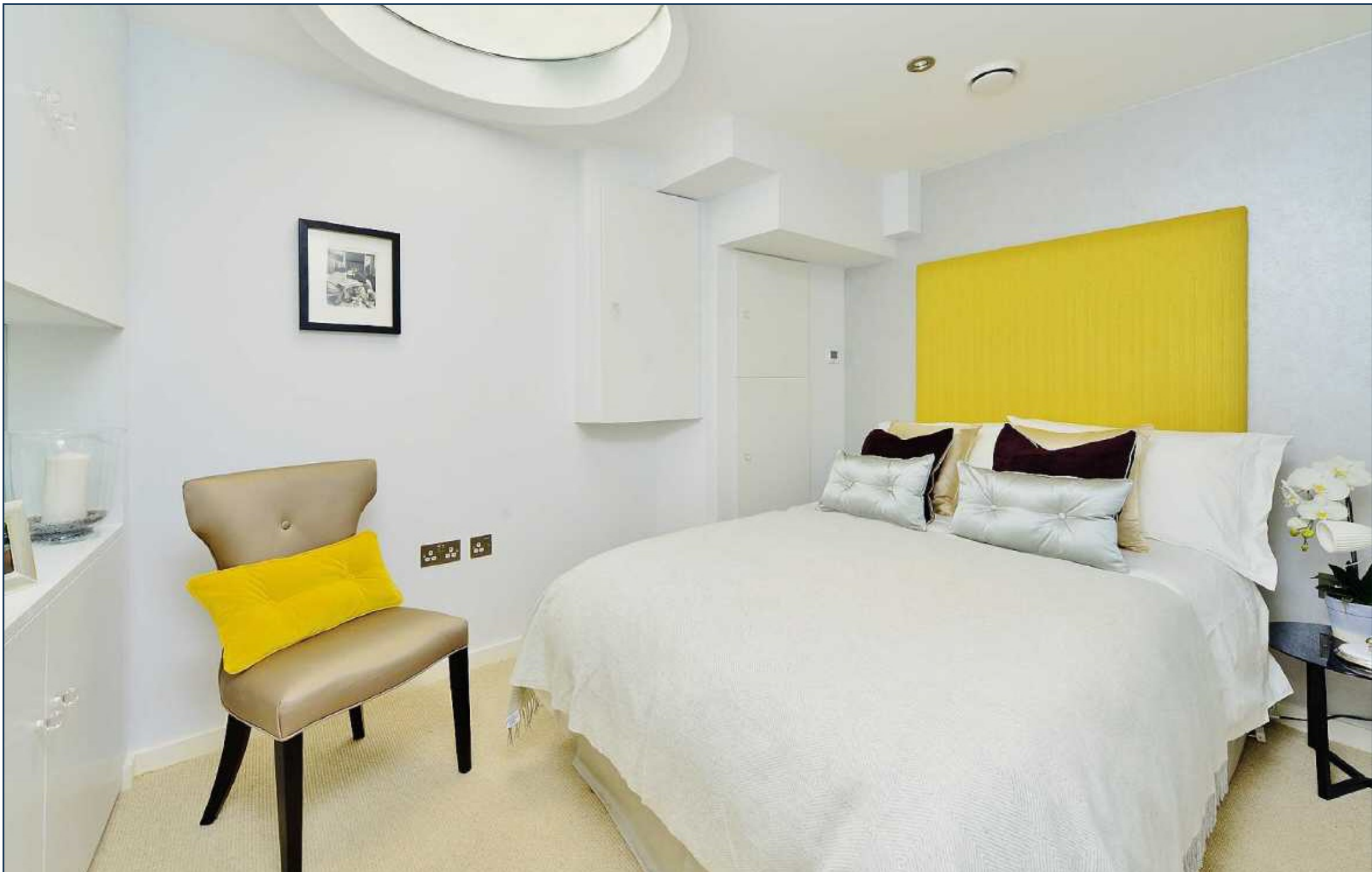
Must be seen - A truly stunning duplex two bedroom fully air conditioned apartment (with outside space) in Covent Garden, a newly completed art gallery conversion designed to the most exacting of specifications.

The property offers LED mood lighting, SONOS wireless integrated sound system, under floor heating, electric retractable glass garden canopy, solid oak flooring and spiral staircase, fully integrated kitchen with natural stone surface and integrated lighting features, marble tiled shower with integrated TV, heat recovery system for bedrooms, built-in storage, and fully electronic glass shading in the master bedroom.

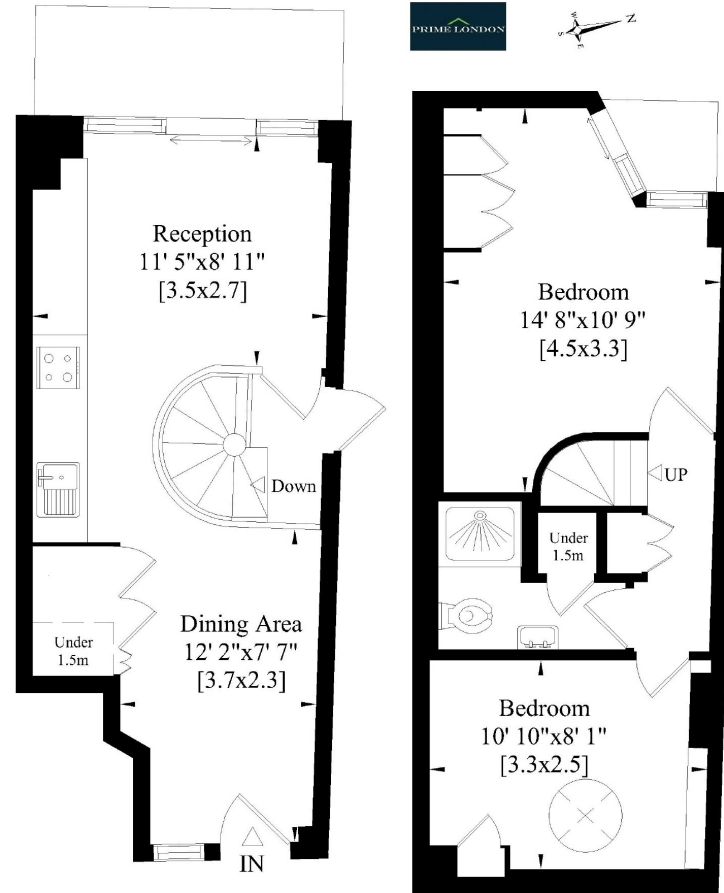
The property is located 250 metres from Covent Garden Market, 150 metres from Trafalgar Square, directly parallel to St Martin's Lane and directly adjacent to the Coliseum Theatre. Locations do not get better!

Available for chain-free purchase and to view immediately.





**BEDFORDBURY, COVENT GARDEN, LONDON WC2**  
APPROXIMATE GROSS INTERNAL AREA 710 SQ FT / 66 SQM



Whilst every attempt has been made to ensure the accuracy of this floor plan, measurements of doors, windows and rooms are approximate. For identification purposes only. Not to scale.©

