







£350,000

Offered CHAIN FREE and situated in a highly sought after residential road, ideally located for Darrick Wood Schools and Orpington mainline station, plus amenities at either Locksbottom or Orpington High Street, is this well presented and exceptionally spacious two double bedroom, ground floor apartment with private and communal gardens. The lease is 993 years from April 2016 and the property is Share of Freehold.

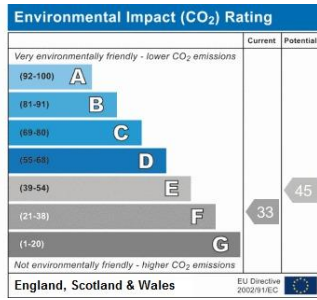
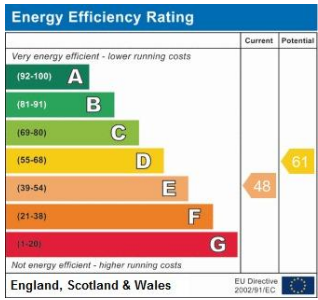
Being one of only eight apartments in the block, this rarely available property comprises an entrance lobby with entry phone system leading to the front door. There is a spacious hallway with wood block flooring and mirrored storage cupboards. The kitchen is a white gloss shaker style and there is space for a fridge freezer, washing machine and tumble dryer, the dishwasher will remain. There is a gas hob and an integrated eye level double oven. The living room is at the rear of the property, there is an attractive ornamental fire surround and patio doors to the rear, overlooking the southerly facing garden. Both bedrooms are doubles and have floor to ceiling mirrored built in wardrobes with integrated drawers and shelving. The bathroom is a good size and has modern white sanitary ware and a vanity unit under the sink, there is a large shower unit.



To the rear the garden area measures approximately 30ft. Parking is unrestricted in the road outside.

Viewings come highly recommended.





Please refer to

---

[www.jdmestateagents.com](http://www.jdmestateagents.com)

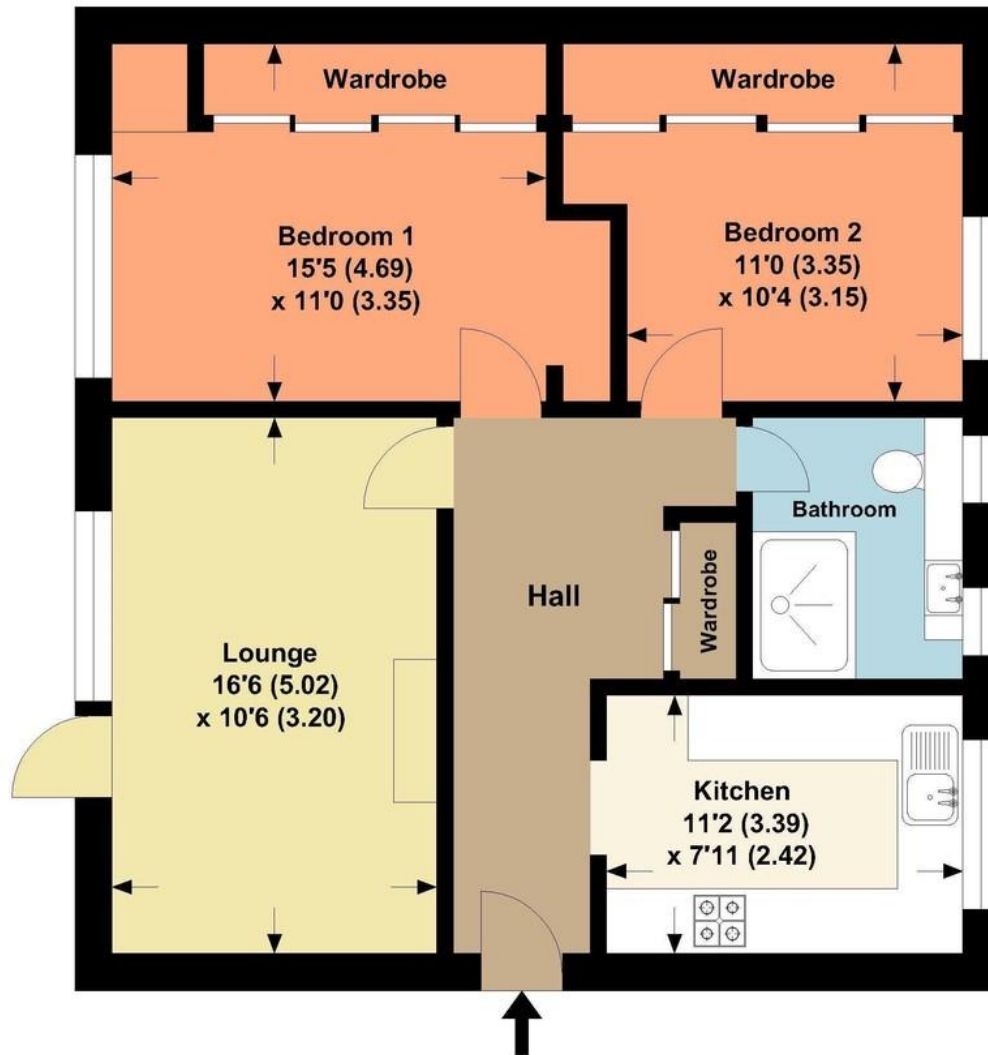
---

to view our full area guides



# Oaklands Court

APPROX. GROSS INTERNAL FLOOR AREA 732.05 SQFT / 68.00 SQM.



This is for guidance only, not to scale and must not be relied upon as a statement of fact.  
Attention is drawn to the notice on these particulars.

