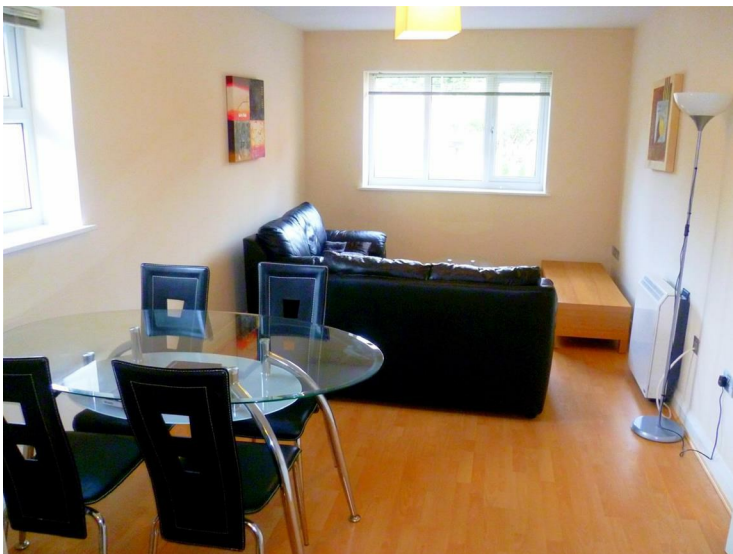


## Church View, Swinton, M27 4UG



**Offers over £75,000**



**\*\* NO CHAIN \*\*** Barlow White are pleased to bring to the market this nicely presented **TWO BEDROOM, FIRST FLOOR** apartment with **ALLOCATED PARKING** . Close to local amenities and good transport links. Internally the apartment is bright, neutral and well maintained with an **OPEN PLAN LIVING SPACE** and a **MODERN KITCHEN**. **TWO BEDROOMS** one of which is a double and the other a single, and a tiled pleasant bathroom. The development has a **SECURE ENTRY** system to the building and benefits from **ELECTRIC HEATING** and **DOUBLE GLAZED** windows. Ideal for first time buyers ( no stamp duty), and investors. EPC: C To arrange a viewing please call Barlow White on 0161 7880909

**Hallway**



L shaped hallway with telephone / intercom entry system. Power points. Laminate flooring.

**Open plan lounge / kitchen**  
**25'2 x 9'10 (7.67m x 3.00m)**



**Kitchen area:**  
Floor and wall mounted cupboards in light wood. Black granite effect work surfaces. Laminate flooring. Stainless steel sink, electric oven and integral washer / dryer.  
**Lounge area:**  
Open plan to kitchen dual aspect windows to front / side. Power points, TV point, telephone point. Laminate flooring.

**Bedroom One**  
**10'11 x 9'11 (3.33m x 3.02m)**



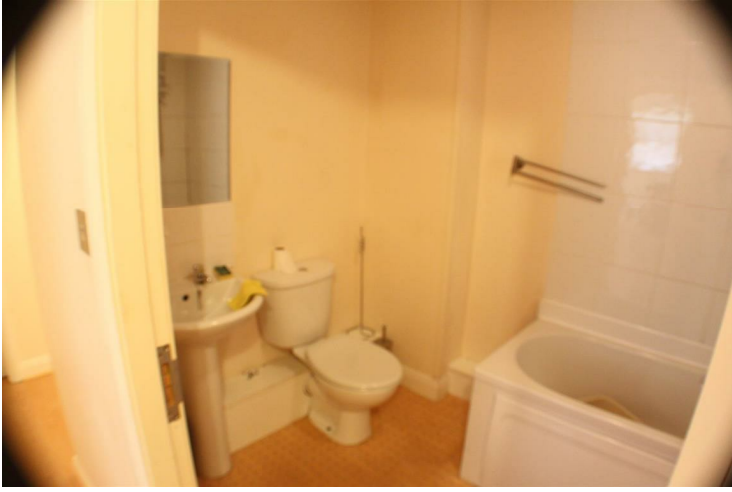
Double in size. Power point, radiator. Window to front. Laminate flooring.

**Bedroom Two**  
**8'7 x 8'4 (2.62m x 2.54m)**



Single in size. Power points, radiator. Front window. Laminate flooring.

## Bathroom



Bath with overhead electric shower. Sink pedestal. Expelair.

