



**24 PARK ROAD, REGENT'S PARK**

**£1,800,000**



An exquisitely refurbished apartment on the edge of Regent's Park, offering nearly 1,400 sq ft of internal space and available for immediate chain-free purchase. This portered Park Road property comprises a sizeable and bright dual-aspect reception, with plentiful entertaining and dining space, two double bedrooms (both with en suite facilities), walk in wardrobe (to master), fully refitted high specification kitchen and ingenious storage solutions throughout this very well considered property. Available immediately, call us today to arrange an appointment to view.

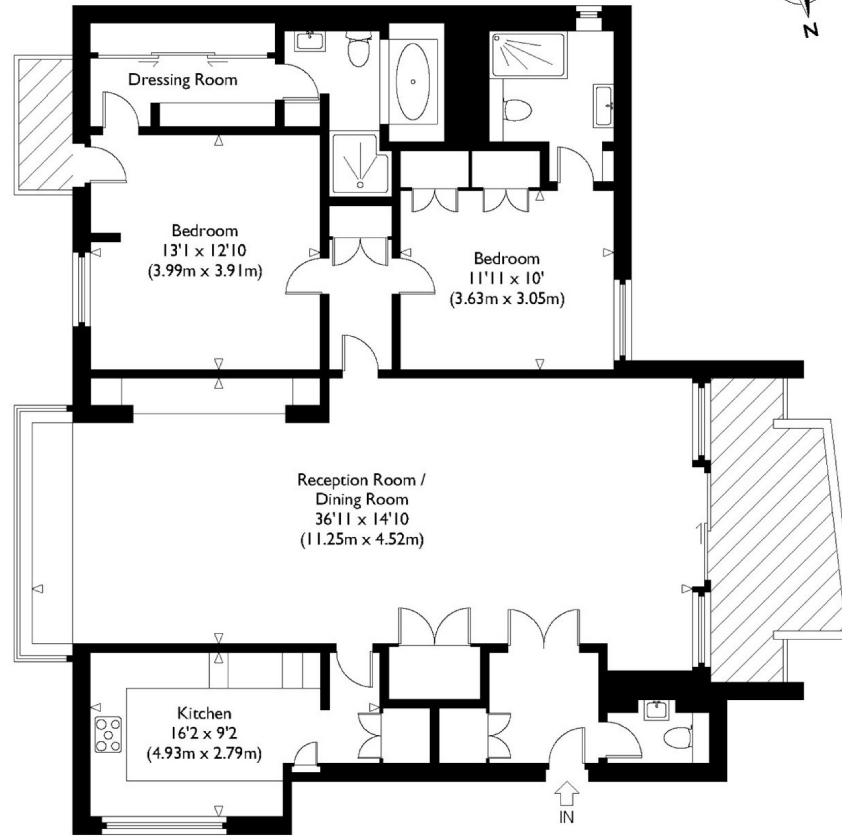






# Park Road, NW1

Approximate Gross Internal Floor Area : 1374 sq ft / 127.6 sq m



Second Floor

Illustration for identification purposes only, measurements are approximate, not to scale.

