

Hillcrest, Salford, M6 8JS



Offers over £80,000

**** NO CHAIN ** 2 BEDROOMS ** FIRST FLOOR**
**** COMMUNAL GARDENS **** Barlow White are pleased to bring to the market this 2 bed, first floor apartment ideally located on Park Rd, Salford 6. The property briefly comprises of ENTRANCE HALL, LOUNGE, KITCHEN BATHROOM, 2 BEDROOMS. Benefiting from Upvc double glazing and electric heating. Externally there is private parking to the rear and a communal garden. Hillcrest is a popular development just a stone's throw away from Salford Royal Hospital, and there are regular buses running direct to Manchester City Centre. Conveniently located close to shops this is a great apartment in a great location. To arrange a viewing please call Barlow White on 0161 7880909

Entrance Hallway

With power points, storage cupboard and carpeted flooring.

Lounge

11'5 x 17'10 (3.48m x 5.44m)



With power points, Tv aerial, wall heater, carpeted flooring and a front aspect window.

Kitchen

8'1 x 8'2 (2.46m x 2.49m)

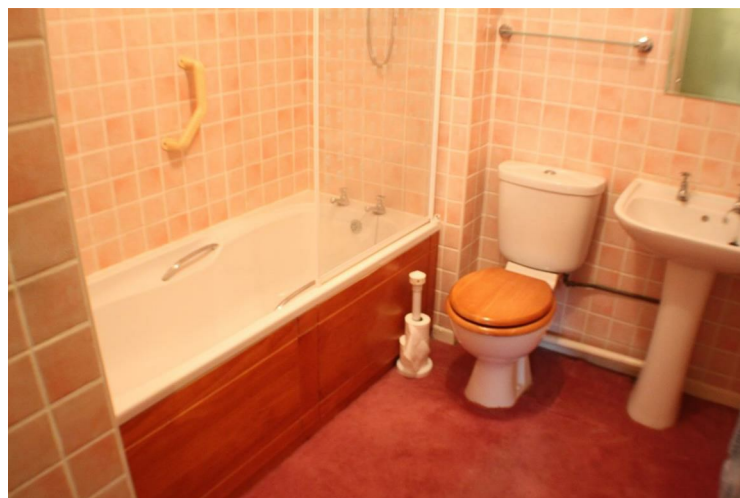


Floor standing and wall mounted units in maple

with a co-ordinating work surface and a stainless steel sink and drainer. Cooker and washing machine, and appliance space for a fridge / freezer. And a rear aspect window.

Bathroom

8'1 x 8'6 (2.46m x 2.59m)



A cream three piece bathroom suite with chrome fittings comprising of Bath with electric shower overhead, pedestal sink and w/c. Towel radiator, tiled walls and lino flooring.

Bedroom One

9'4 x 12'2 (2.84m x 3.71m)

Power points, electric heater, front aspect window and carpeted flooring.

Bedroom Two

9'1 x 8'2 (2.77m x 2.49m)

power points, electric heater, rear aspect window and carpeted flooring.

