



**THE CORNICHE, 20 ALBERT EMBANKMENT,  
£2,799,950**

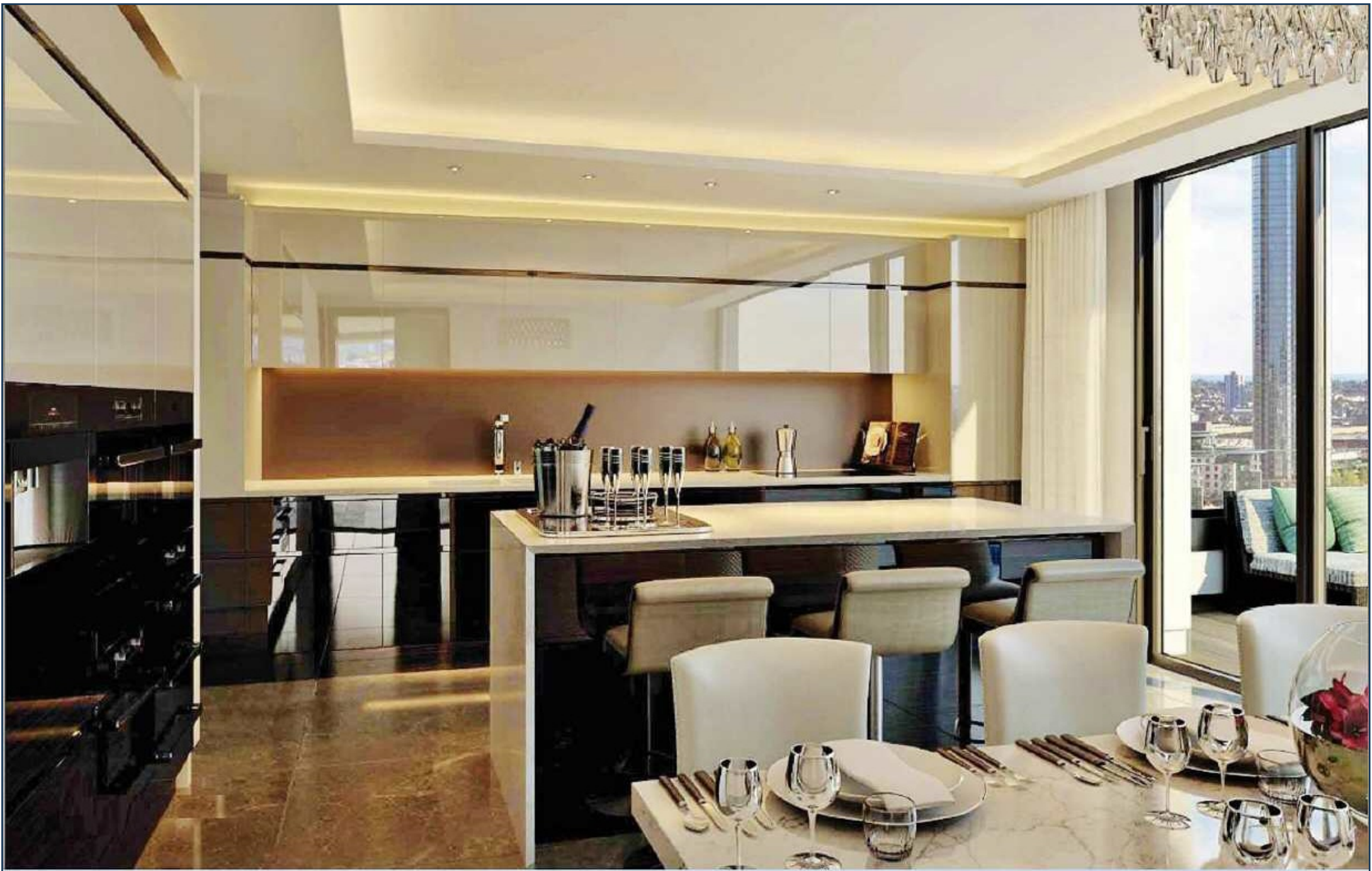


A spectacular ninth floor, prime-positioned 1,446 sq ft two bedroom apartment with direct river views, secure parking and sizeable balcony, available for off-plan purchase in The Corniche, 20 Albert Embankment, for completion Q2 2017.

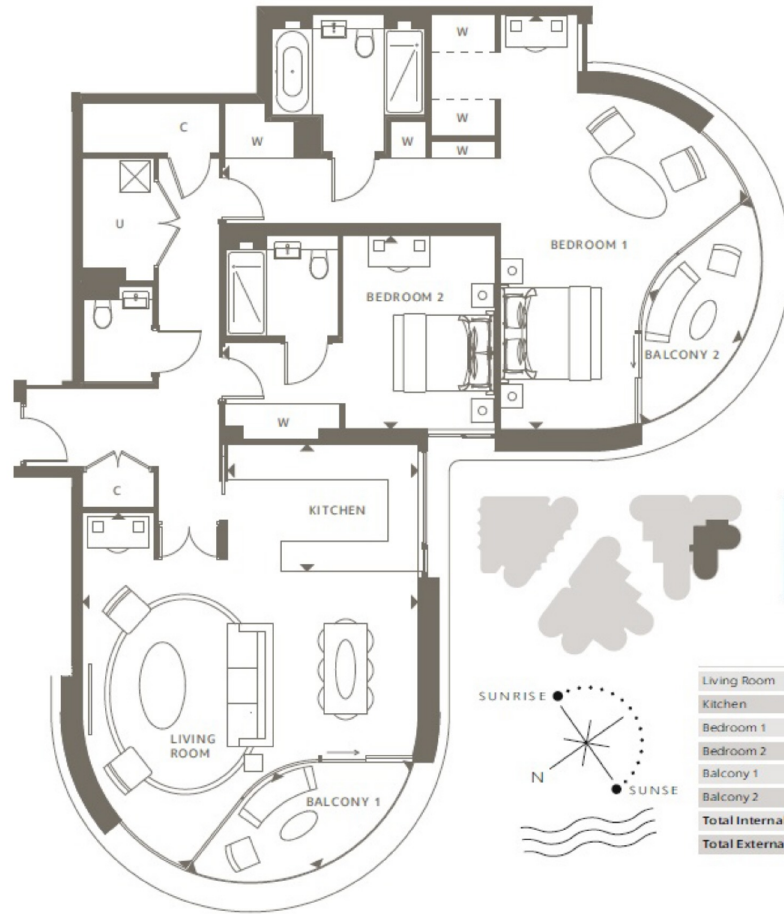
Located in an enviable position on the bank of the River Thames, The Corniche (designed by Foster & Partners) captures some of London's most exquisite views, not only of the Houses of Parliament and the River Thames, but also the Tate Britain, London Eye and the City.

The development includes extensive residents facilities including a restaurant, gym, spa, pool and cinema, and also commercial spaces such as restaurants and cafes focused around a well considered and inviting public space.





**THE CORNICHE, 20 ALBERT EMBANKMENT**  
**NINTH FLOOR**



|                            |                             |                               |
|----------------------------|-----------------------------|-------------------------------|
| Living Room                | 6.60 x 6.98m                | 21'8" x 22'11"                |
| Kitchen                    | 3.75 x 2.50m                | 12'4" x 8'2"                  |
| Bedroom 1                  | 10.31 x 8.15m               | 33'10" x 26'9"                |
| Bedroom 2                  | 5.35 x 3.80m                | 17'7" x 12'6"                 |
| Balcony 1                  | 4.84 x 2.01m                | 15'11" x 6'7"                 |
| Balcony 2                  | 4.84 x 2.01m                | 15'11" x 6'7"                 |
| <b>Total Internal Area</b> | <b>134.35 m<sup>2</sup></b> | <b>1,446.1 ft<sup>2</sup></b> |
| <b>Total External Area</b> | <b>12.48 m<sup>2</sup></b>  | <b>134.2 ft<sup>2</sup></b>   |

