



**TUDOR HOUSE, ONE TOWER BRIDGE**

**£1,700,000**

**PRIME LONDON**



At the front of Tudor House and with excellent views over Tower Bridge, this newly completed and bright apartment of over 1,000 sq ft offers an excellent position within this high specification development.

One Tower Bridge is situated on one of the last great riverside sites in London. Just moments from the City it offers the ultimate in 5-star luxury living experiences. Each apartment has been individually considered to ensure every demand of contemporary luxury living is met (being designed by Conran and Partners).

Apartments benefit from state of the art integrated systems using the very latest in smart home technology, underfloor heating throughout, comfort cooling to principal rooms, ergonomically planned designer kitchens and individual finishes.

The development itself offers a residents only health club including pool, spa and gym facility, private courtyard garden, business lounge and virtual golf.

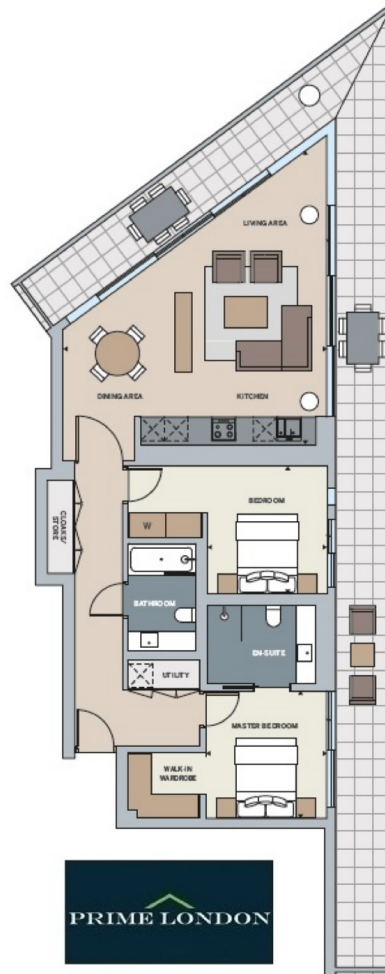
Offered with balance of 999 year leasehold, and for viewing via appointment through Prime London.







**TUDOR HOUSE, ONE TOWER BRIDGE  
FIRST FLOOR**



|  |                                       |
|--|---------------------------------------|
| <b>Total internal area (apartment)</b> | 1,043 sq ft / 94.2 sq m               |
| <b>Living/dining/kitchen</b>           | 25' 7" x 21' 9" / 7.80 m x 6.62 m     |
| <b>Master bedroom</b>                  | 10' 6" x 9' 11" / 3.20 m x 3.02 m     |
| <b>Bedroom 2</b>                       | 10' 6" x 9' 10" / 3.20 m x 2.90 m     |
| <b>Total external area (balcony)</b>   | 530 sq ft / 49.28 sq m                |
| <b>Balcony dimensions (living)</b>     | 7'0" 11" x 4' 11" / 2.436" m x 1.50 m |
| <b>Balcony dimensions (living)</b>     | 38' 7" x 4' 11" / 11.77" m x 1.50 m   |
| <b>Ceiling height</b>                  | 8' 9" / 2.65 m                        |

