

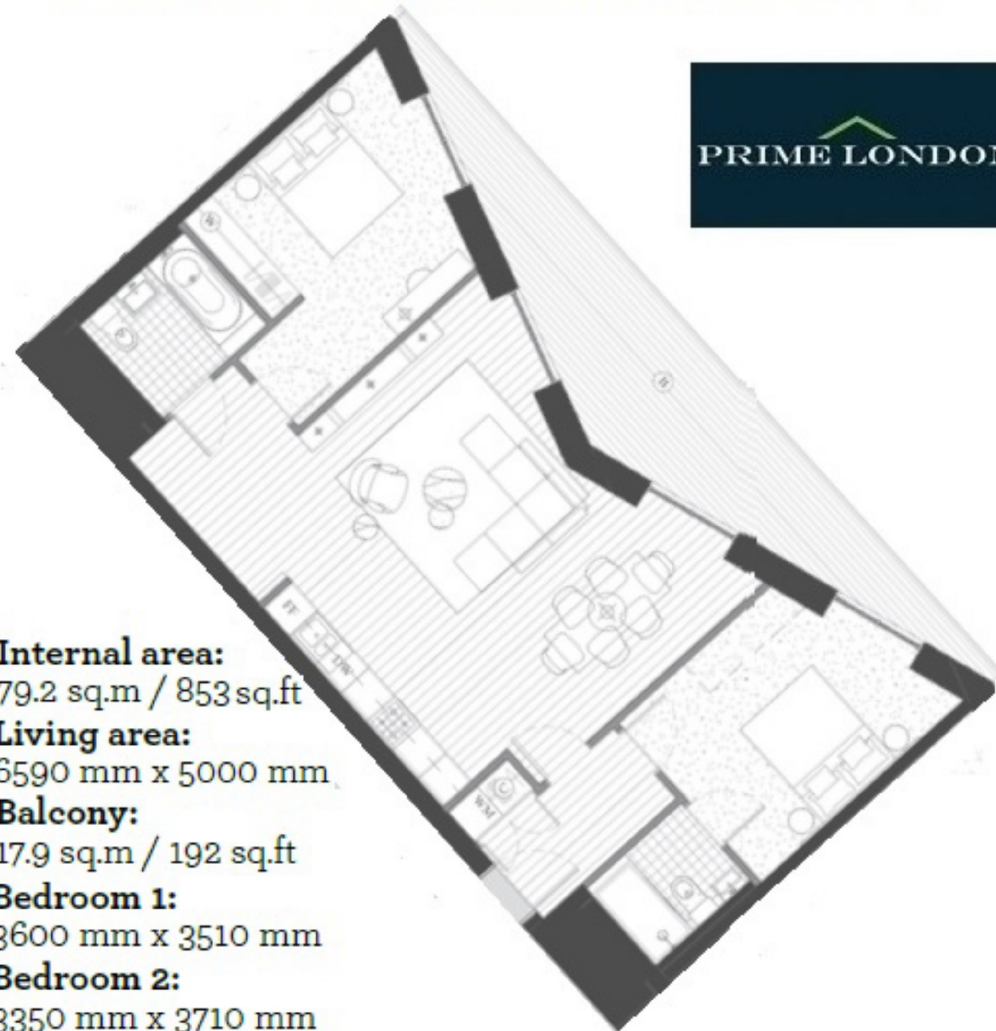


ANCHOR BUILDING, ROYAL WHARF

£484,000



ANCHOR BUILDING, ROYAL WHARF, LONDON E16



Internal area:
79.2 sq.m / 853 sq.ft
Living area:
6590 mm x 5000 mm
Balcony:
17.9 sq.m / 192 sq.ft
Bedroom 1:
3600 mm x 3510 mm
Bedroom 2:
3350 mm x 3710 mm