

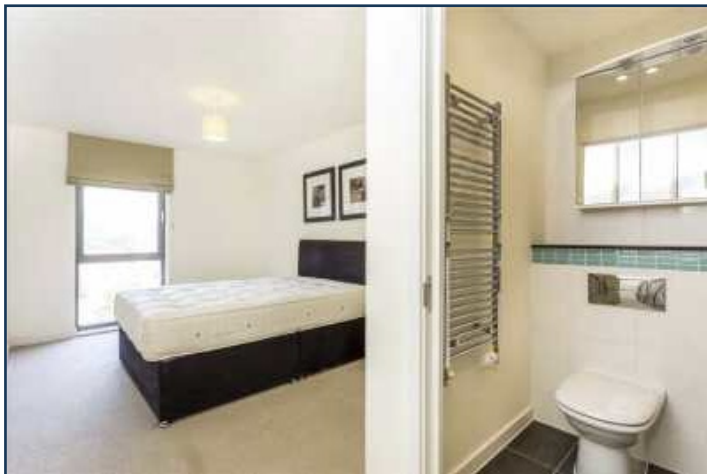


**THE CHI BUILDING, WAPPING**  
**FIXED ASKING PRICE £600,000**



A modern two bedroom apartment of 875 sq ft, located only a short walk from The City, St Katherine Docks and Tower Hill. The apartment comprises a sizeable reception with open plan kitchen and balcony access, master bedroom with integrated storage and en suite, generous second bedroom, separate master bathroom and storage cupboard.

The City, Canary Wharf and West End are all easily accessed by Shadwell (London Overground and DLR), Wapping (London Overground), Tower Hil (District and Circle Lines)l and Tower Gateway Stations (DLR). The Cycle Superhighway also offers a convenient route for for Cyclists





**THE CHI BUILDING, LONDON E1**  
**THIRD FLOOR**  
**GROSS INTERNAL AREA 875 SQ FT / 81.3 SQM**

