







CASH BUYERS ONLY. Immaculately presented 2nd floor purpose built flat. Ideally situated near Greenwich Park with Maze Hill Station just over half a mile and Blackheath Village just across the Heath. The building is designed by the famous architects Chamberlin, Powell and Bon □ they also designed the Barbican. Offered with no chain this would make an excellent investment purchase as rental demands are high in this area. Benefits to note are a modern fitted kitchen with integrated appliances including a double oven and halogen hob, built in fridge freezer and washing machine. There is a fully tiled contemporary shower room and neutral walls and flooring.

The vendor has also added fitted storage units. Sunny and full of light apartment in a green and quiet area. The flat benefits from secure gate entrance and free parking.

This is an ex-local authority property where most lenders will not be offering financing, however it is an exceptional opportunity to own a property in a prime location at an affordable price.

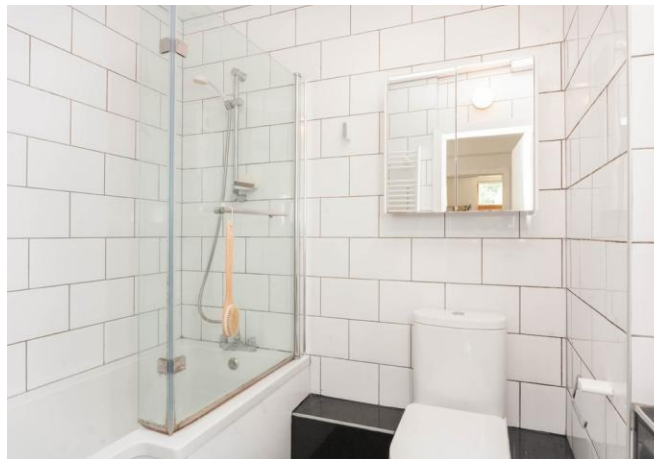


%epcGraph\_c\_1\_326%

Please refer to

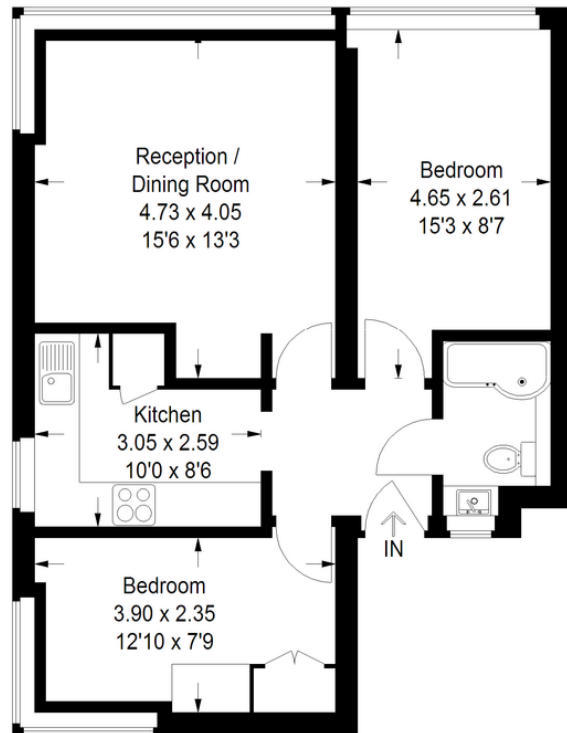
[www.jdmestateagents.com](http://www.jdmestateagents.com)

to view our full area guides



# Westcombe Court, SE3

Approximate Gross Internal Area  
56.1 sq m / 604 sq ft



## First Floor

Illustration for identification purposes only,  
measurements are approximate, not to scale.  
FloorplansUsketch.com © 2016 (ID 263805)

