

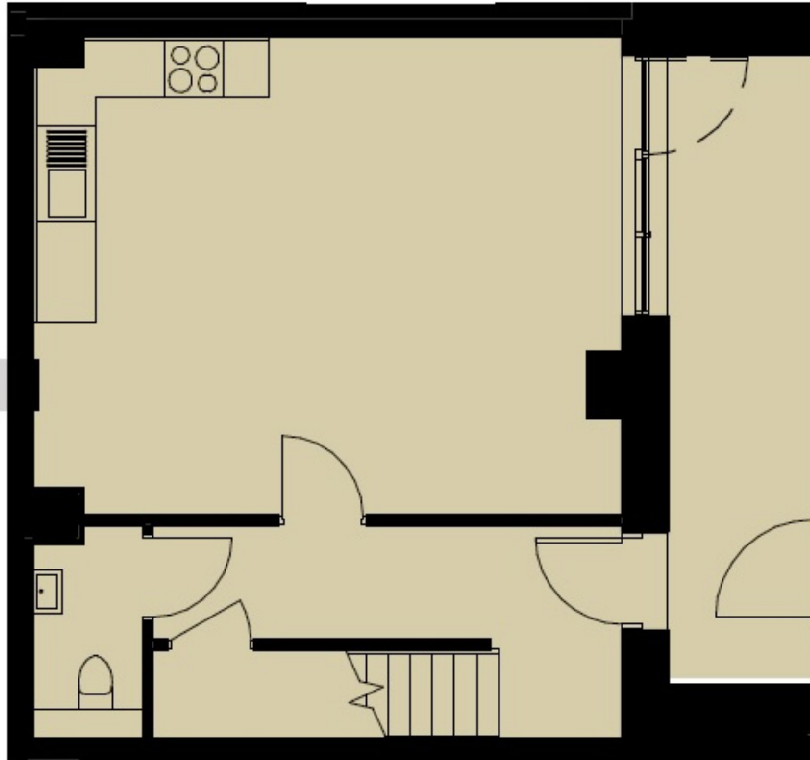


MERCER HOUSE, BATTERSEA EXCHANGE

£785,000



MERCER HOUSE, BATTERSEA EXCHANGE, NINE ELMS SW8



TOTAL INTERNAL AREA	88.86 sqm / 956.48 sqft	
KITCHEN	11.9 sqm (128.1 sqft)	4985 X 2460 mm
LIVING ROOM	18.2 sqm (195.9 sqft)	4985 X 3675 mm
GARDEN	9.80 sqm (105.49 sqft)	6535 X 1500 mm

