





Guide Price £300,000 - £325,000

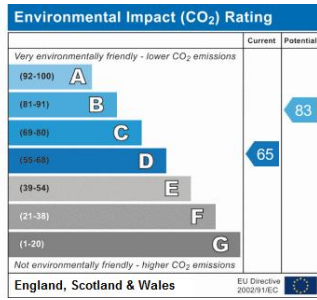
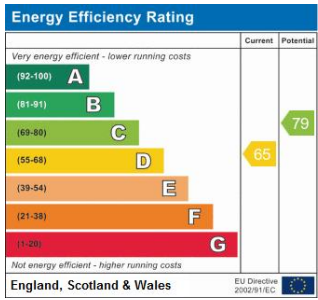
A extremely well presented first floor two bedroom purpose built apartment offered to the market.

Accessed via a secure entry phone system the property comprises a good sized living/dining room with large window to the front. The kitchen is fitted with a full range of wall and base units with an integrated oven, hob and extractor and space for a fridge freezer and washing machine. The bathroom is also presented in a modern style and both the kitchen and bathrooms feature glass splash backs which add a contemporary twist to the presentation of this apartment.

In keeping with the excellent presentation, the master bedroom benefits from a range of built in wardrobes and the guest bedroom completes the accommodation.

Further benefits include newly laid carpet, new boiler, bright entrance hallway and to the rear is a garage en bloc and communal gardens.



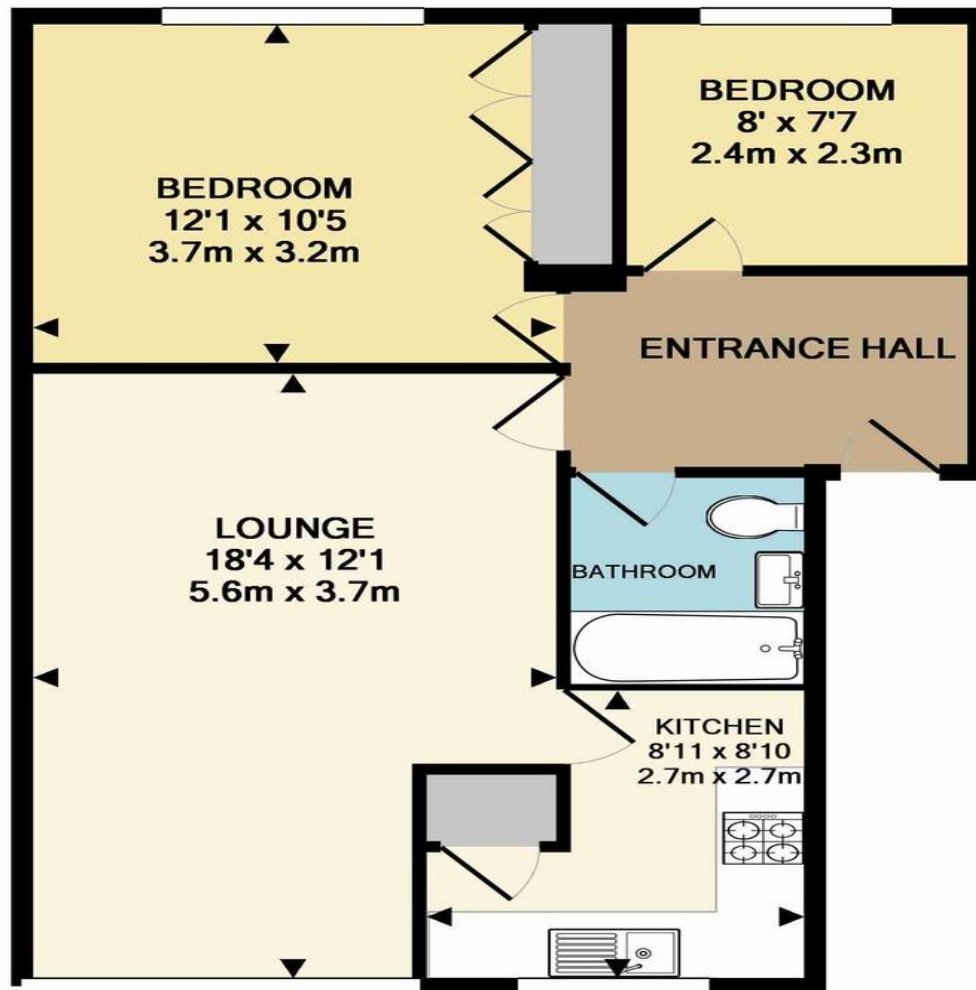


Please refer to

[www.jdmestateagents.com](http://www.jdmestateagents.com)

to view our full area guides





TOTAL APPROX. FLOOR AREA 556 SQ.FT. (51.7 SQ.M.)

Whilst every attempt has been made to ensure the accuracy of the floor plan contained here, measurements of doors, windows, rooms and any other items are approximate and no responsibility is taken for any error, omission, or mis-statement. This plan is for illustrative purposes only and should be used as such by any prospective purchaser. The services, systems and appliances shown have not been tested and no guarantee as to their operability or efficiency can be given

Made with Metropix ©2016

