





## CHAIN FREE

Situated on a quiet court yard in Crofton is this two bedroom ground floor maisonette. Accommodation comprises, lounge, kitchen/ diner, bathroom, master bedroom with fitted wardrobes and a second double bedroom.

The property requires modernisation and is the ideal opportunity for a landlord or a first time buyer to put their own stamp on a property. There is a garage en bloc and a long lease.

Ammenities include local shops, restaurants and an array of local bus routes. Petts Wood and Orpington which offer trains links servicing London Victoria, London Charing Cross, London Bridge and Cannon Street.

Lease: 999 years from 1969

Service Charge: £250 per anum



EPC TO FOLLOW

Please refer to

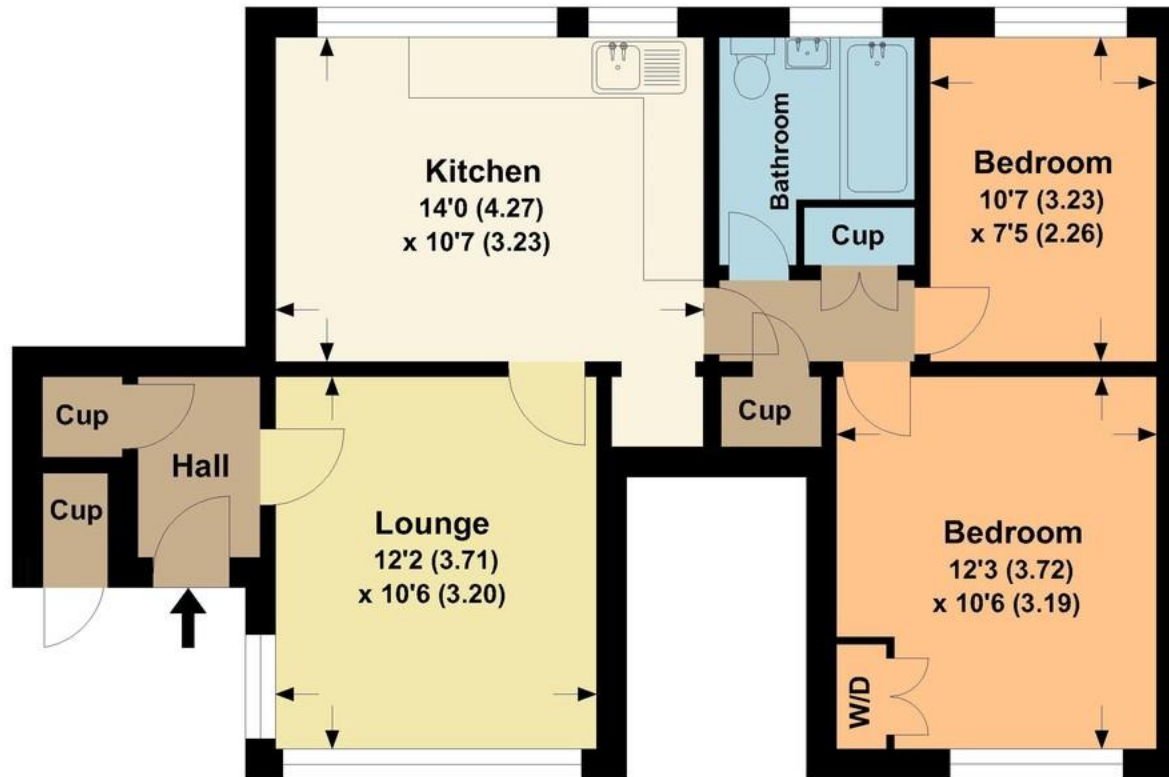
[www.jdmestateagents.com](http://www.jdmestateagents.com)

to view our full area guides



# 29 Clareville Road

APPROX. GROSS INTERNAL FLOOR AREA 627.85 SQFT / 58.32 SQM.



This is for guidance only, not to scale and must not be relied upon as a statement of fact.  
Attention is drawn to the notice on these particulars.

