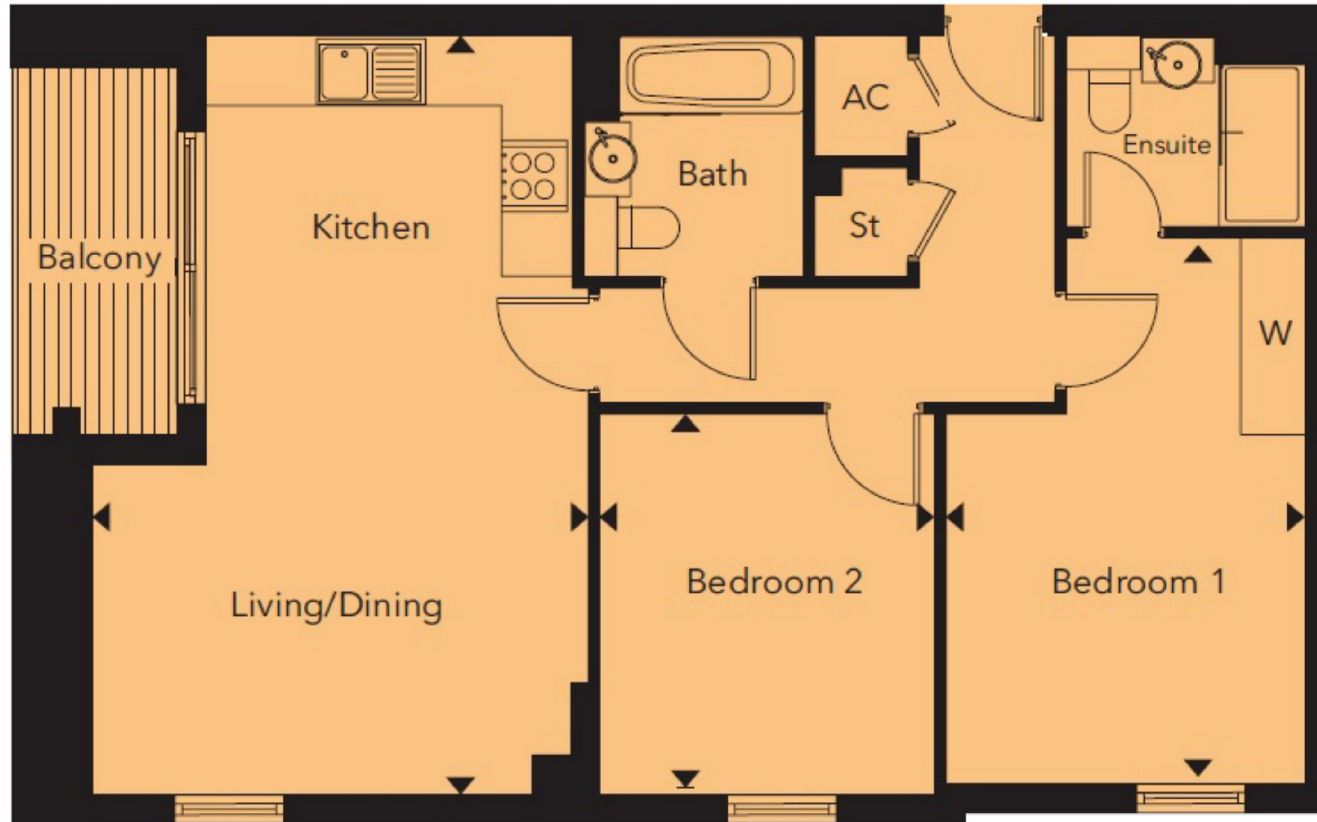




BERMONDSEY WORKS, BERMONDSEY
£475,000



THE TOWER AT BERMONDSEY WORKS, LONDON SE16
APPROXIMATE GROSS INTERNAL AREA 783 SQ FT / 72.7 SQM



KITCHEN/LIVING/DINING	6.94m x 4.54m	22'9" x 14'11"
BEDROOM 1	4.99m x 3.30m	16'5" x 10'10"
BEDROOM 2	3.48m x 3.07m	11'5" x 10'1"

