

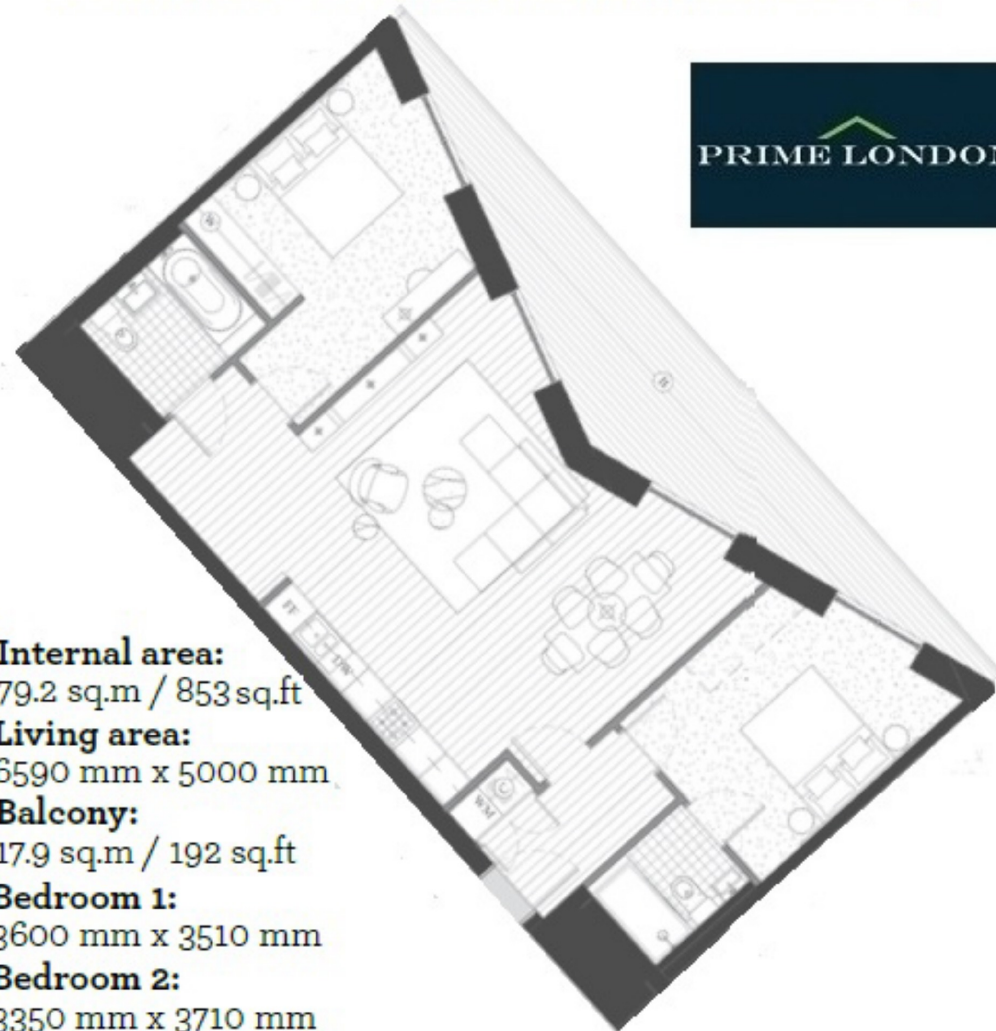


## ANCHOR BUILDING, ROYAL WHARF

£484,000



ANCHOR BUILDING, ROYAL WHARF, LONDON E16



**Internal area:**  
79.2 sq.m / 853 sq.ft  
**Living area:**  
6590 mm x 5000 mm  
**Balcony:**  
17.9 sq.m / 192 sq.ft  
**Bedroom 1:**  
3600 mm x 3510 mm  
**Bedroom 2:**  
3350 mm x 3710 mm