





Accessed via a long, sweeping driveway is the stunning, Grade II listed, 19th century Goddington Manor. The development offers a rare opportunity to enjoy a collection of two bedroom luxury apartments. With a commute into London Bridge only taking 18 minutes from Orpington station, Goddington Manor is ideally located for those who need easy accessibility to London but are also looking for the seclusion and character that this arts and crafts style property provides. Overlooking Goddington Park, the breath taking views must be seen in person to be truly appreciated.

The accommodation comprises a kitchen/diner fitted with bespoke kitchen units and Bosch appliances. The master bedroom benefits from an ensuite shower room and there is a further double bedroom, bathroom and separate toilet. Both the kitchen and bedroom two have exposed brickwork which adds perfectly to the blend of modern living whilst maintain the character of the building.

Internal viewing is essential and comes highly recommended.



EPC TO FOLLOW

Please refer to

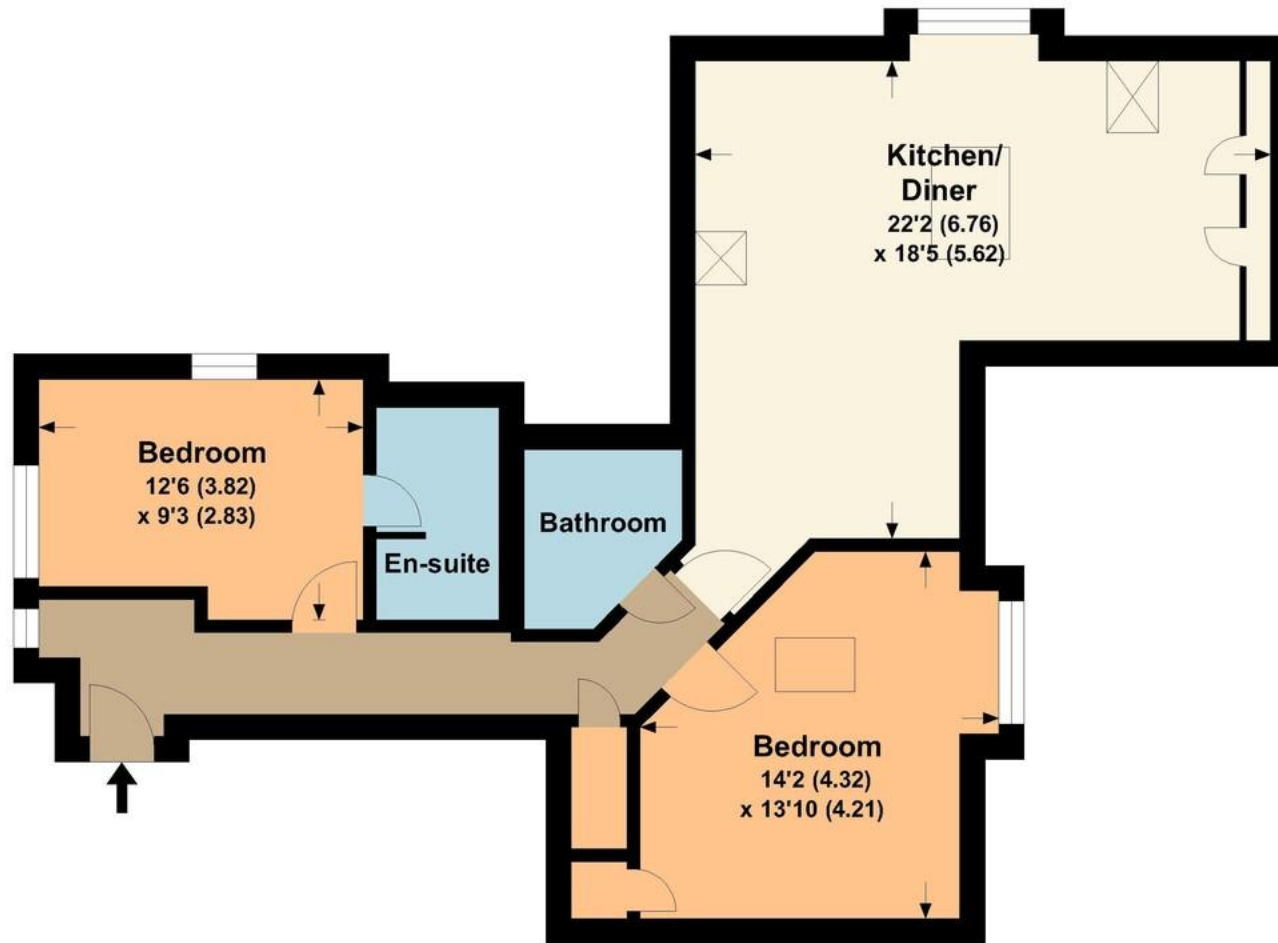
www.jdmestateagents.com

to view our full area guides



Flat 16 Goddington Manor

APPROX. GROSS INTERNAL FLOOR AREA 819.70 SQFT / 76.15 SQM.



This is for guidance only, not to scale and must not be relied upon as a statement of fact.
Attention is drawn to the notice on these particulars.

