





GUIDE PRICE £725,000 - £750,000

Accessed via a long, sweeping driveway is the stunning, Grade II listed, 19th century Goddington Manor. The development offers a rare opportunity to enjoy a collection of two bedroom luxury apartments. With a commute into London Bridge only taking 18 minutes from Orpington station, Goddington Manor is ideally located for those who need easy accessibility to London but are also looking for the seclusion and character that this arts and crafts style property provides. Overlooking Goddington Park, the breath taking views must be seen in person to be truly appreciated.

The accommodation comprises bespoke kitchen/diner with granite work tops and Bosch integrated appliances. The "Inside garden" with electric retractable roof lantern can be found via bi-folding doors from the kitchen or the master bedroom. The space provides the perfect balance between inside and outside living, ideal for those looking to entertain. Both bedroom two and the master bedroom have ensuite bathrooms with a walk-in shower.



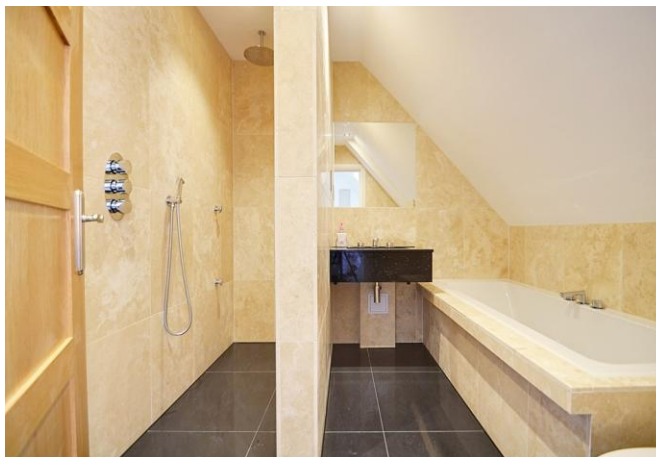
Internal viewing comes highly recommended to fully appreciate the quality of this luxury apartment.

EPC TO FOLLOW

Please refer to

www.jdmestateagents.com

to view our full area guides



Flat 10 Goddington Manor

APPROX. GROSS INTERNAL FLOOR AREA 1385.63 SQFT / 128.73 SQM.



This is for guidance only, not to scale and must not be relied upon as a statement of fact. Attention is drawn to the notice on these particulars.

