

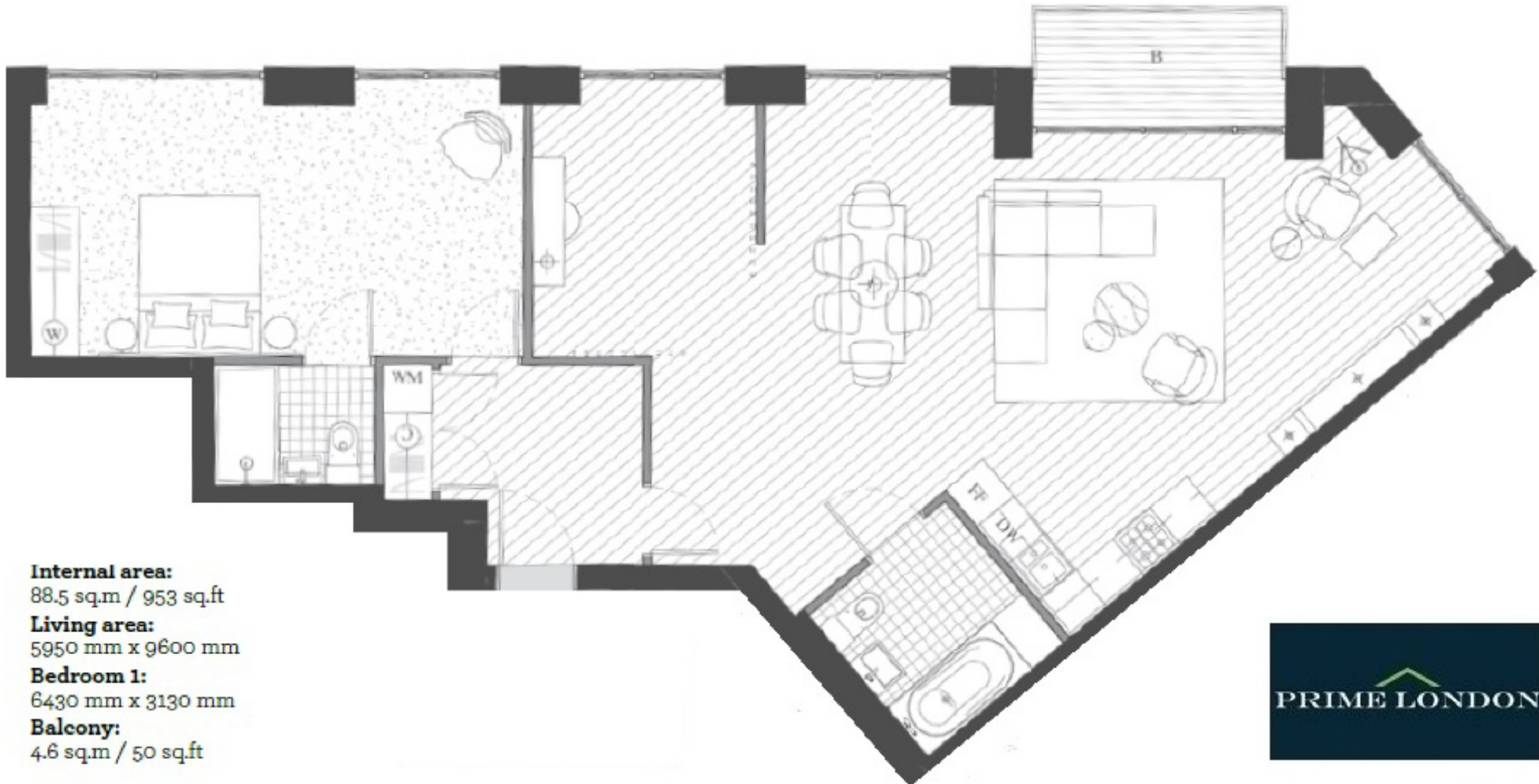


**LATITUDE BUILDING, ROYAL WHARF**

**£455,000**



## LATITUDE BUILDING, ROYAL WHARF, LONDON E16



**Internal area:**

88.5 sq.m / 953 sq.ft

**Living area:**

5950 mm x 9600 mm

**Bedroom 1:**

6430 mm x 3130 mm

**Balcony:**

4.6 sq.m / 50 sq.ft

