





Guide Price £325,000 - £350,000

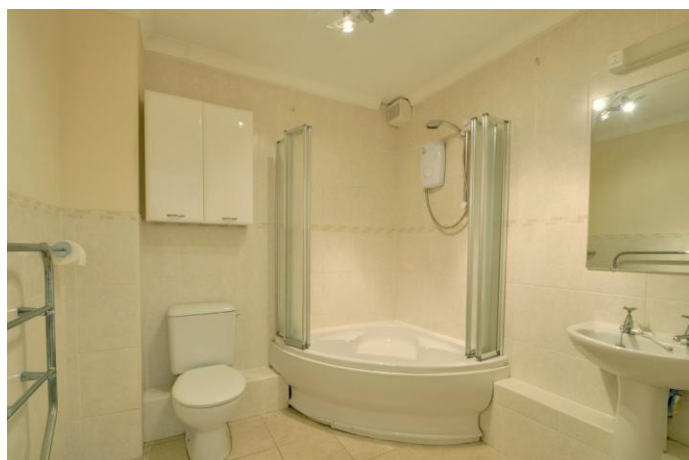
A two bedroom, second floor apartment situated in the sought after gated development of Forest Lawns. Accessed via a secure entry phone system, stairs lead to the second floor to this front facing apartment benefitting from a south facing balcony.

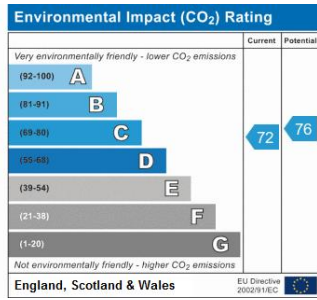
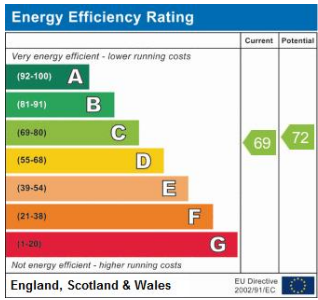
The accommodation consists of a hallway with plentiful storage, a spacious living room with a large window and access to the balcony and a good sized kitchen. The kitchen is fitted with a range of wall and base units with space for appliances. There are two good sized bedrooms both with built in cupboards and a large bathroom fitted with a corner bath with shower over, sink and WC. The property is heated by a warm air heating system.

To the rear of the property is a large communal garden area with garages en bloc behind.

Situated in a desirable location between Elmstead Woods and Sundridge Park, this property is in an ideal location for local stations to London and access to Bromley town centre as well as local schools including Braeside Preparatory School and Scotts Park.

The property is offered as Share of Freehold.



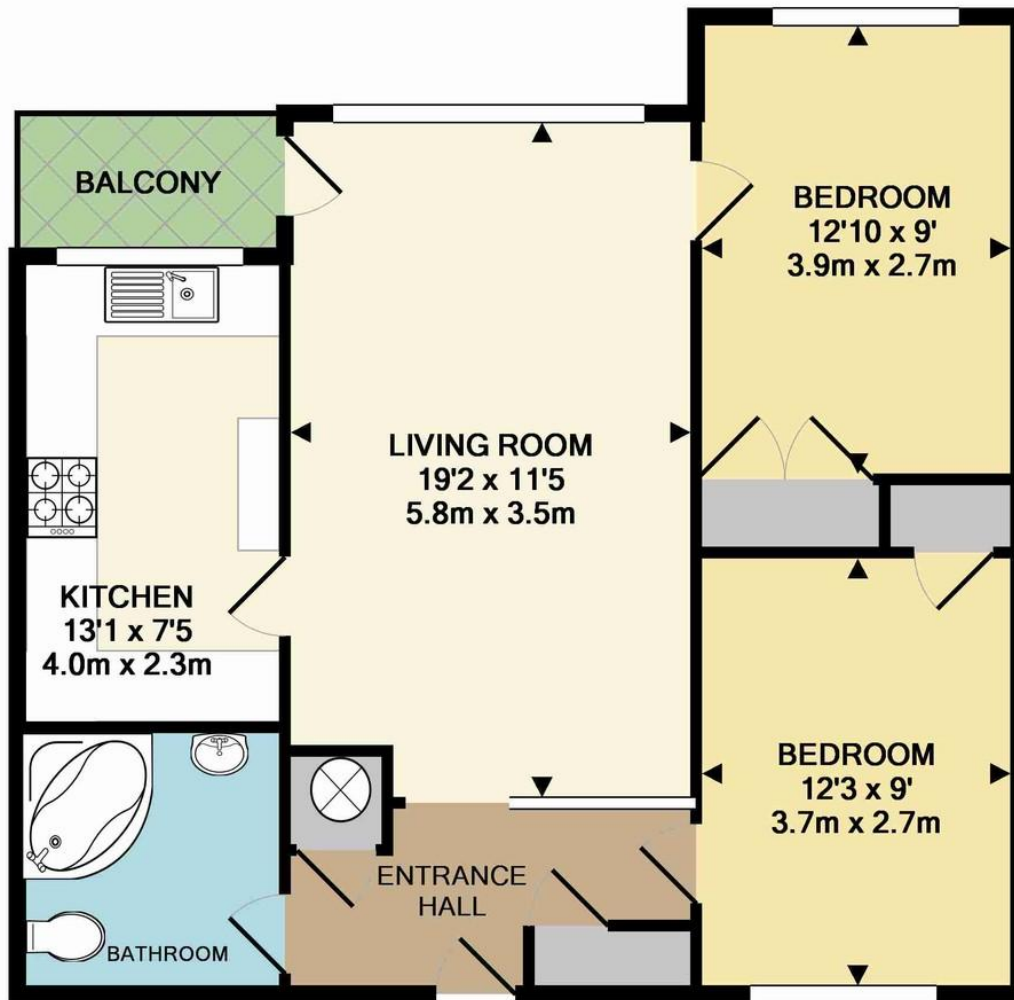


Please refer to

www.jdmestateagents.com

to view our full area guides





TOTAL APPROX. FLOOR AREA 677 SQ.FT. (62.9 SQ.M.)

Whilst every attempt has been made to ensure the accuracy of the floor plan contained here, measurements of doors, windows, rooms and any other items are approximate and no responsibility is taken for any error, omission, or mis-statement. This plan is for illustrative purposes only and should be used as such by any prospective purchaser. The services, systems and appliances shown have not been tested and no guarantee as to their operability or efficiency can be given

Made with Metropix ©2016

