





Simply stunning, spacious and super location!

This immaculately presented two bedroom period conversion offers style, plenty of natural light but most importantly space. It is almost like a house!

The first floor would provide the perfect setting for your house warming party!

Large lounge, spacious kitchen/diner, great sized bathroom with separate WC and even a study! We cannot stress enough the space on offer here and we urge you to take a look for yourself, we are confident you will be impressed.

Tastefully decorated with bundles of character and style, mixed with some original features from the period, this home has some bonus features such as off street parking, own private entrance hall and lease in excess of 100 years.

The vibrant and classy Blackheath Village, the famous Greenwich Park and the Heath all located a mile or under from the property.



Lease: 150 years from 24th June 1987

Service charge: TBA

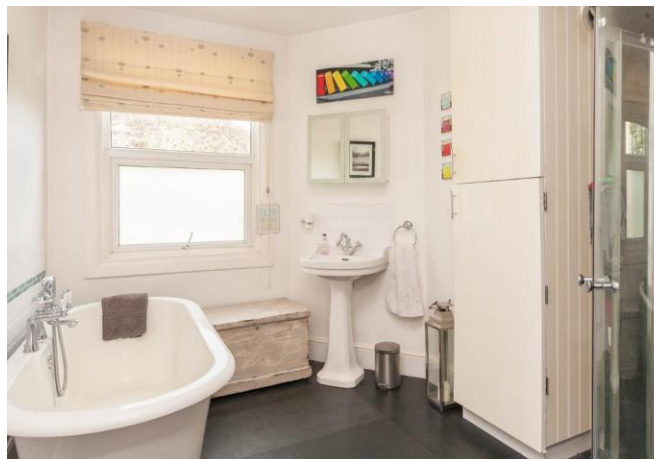
Ground rent: £350

Energy Efficiency Rating		
	Current	Potential
Very energy efficient - lower running costs		
(92-100) A		
(81-91) B		
(69-80) C		
(55-68) D		
(39-54) E		
	39	45

Please refer to

www.jdmestateagents.com

to view our full area guides



Shooters Hill Road, SE3

Approximate Gross Internal Area = 102.4 sq m / 1102 sq ft
(Excluding Eaves)

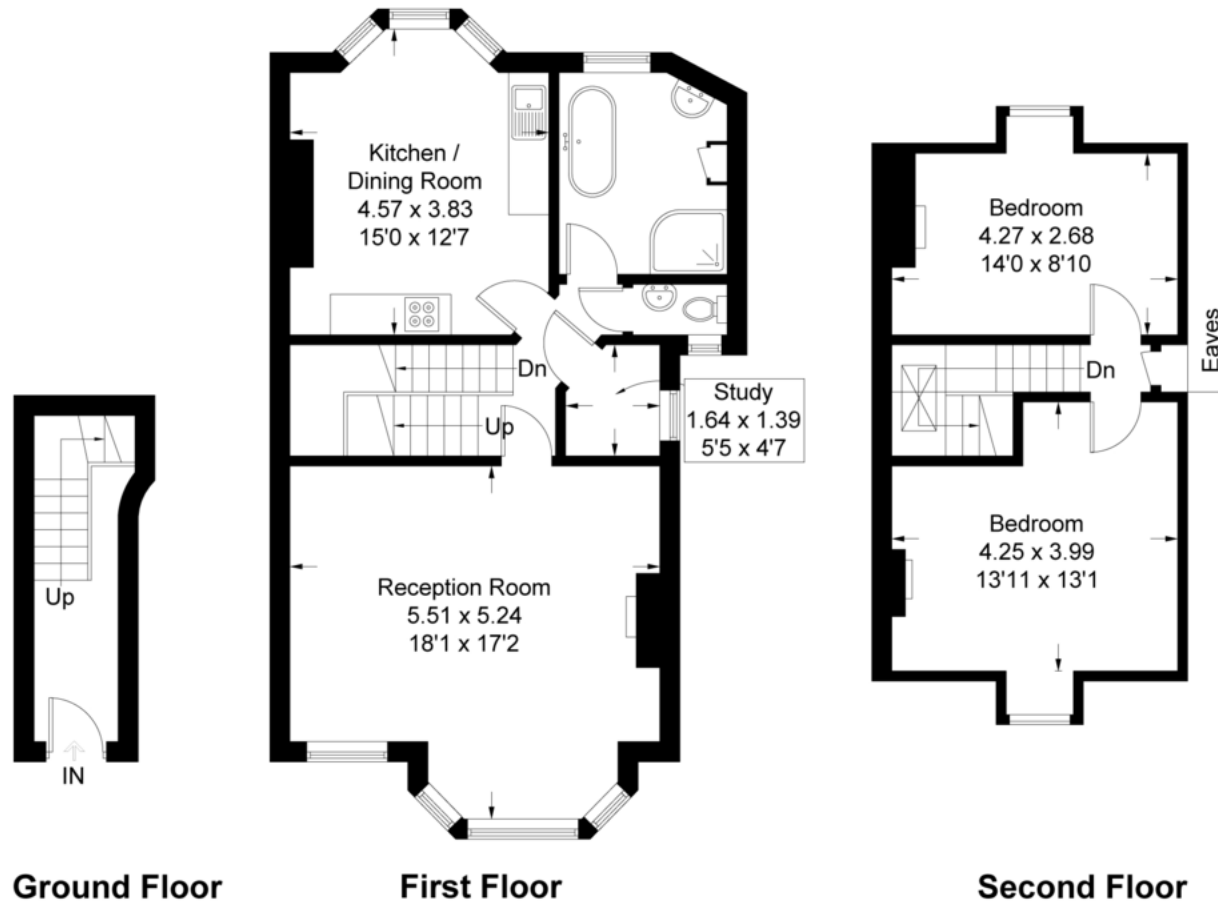


Illustration for identification purposes only, measurements are approximate,
not to scale. FloorplansUsketch.com © 2016 (ID277744)

