

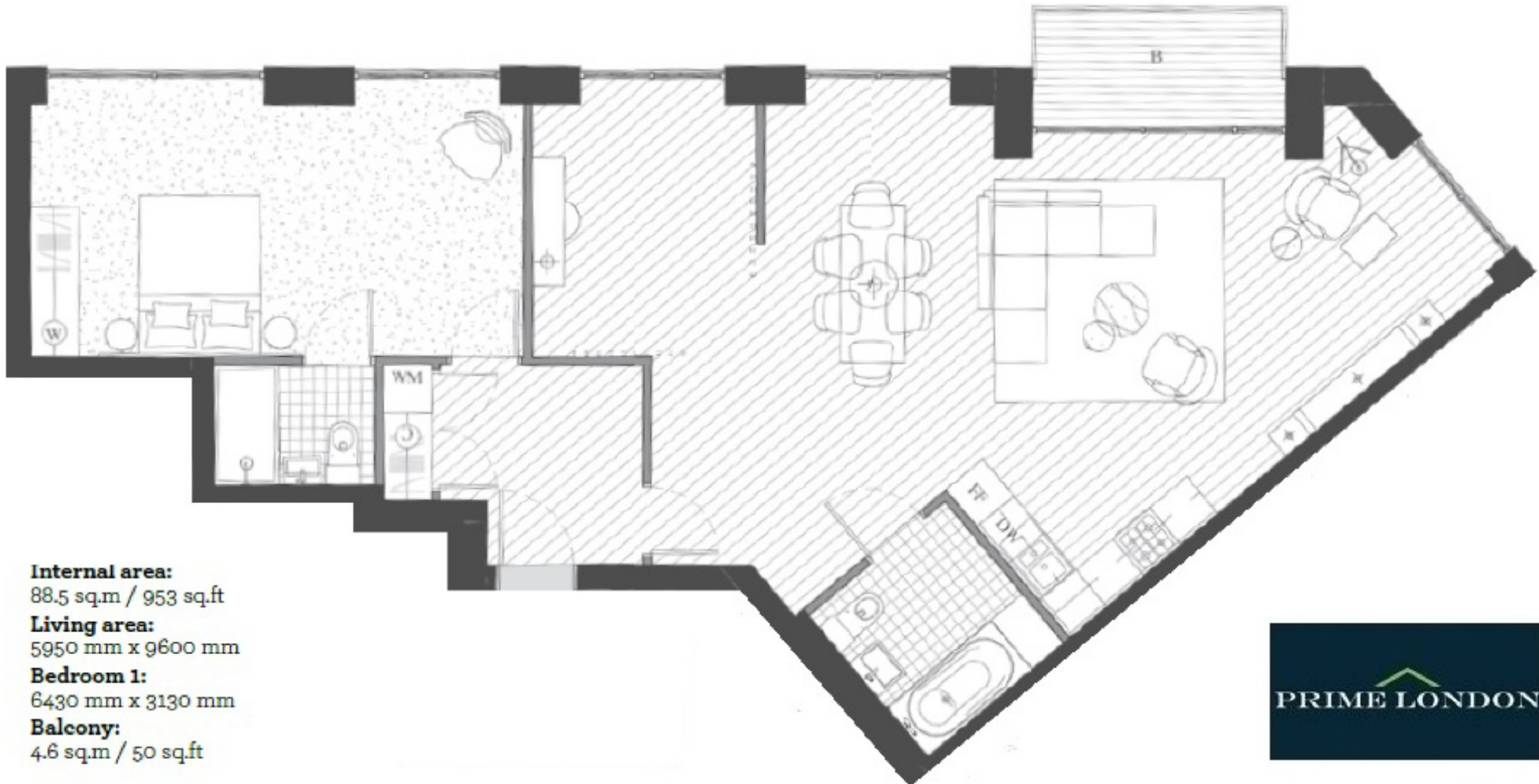


LATITUDE BUILDING, ROYAL WHARF

£455,000



LATITUDE BUILDING, ROYAL WHARF, LONDON E16



Internal area:
88.5 sq.m / 953 sq.ft
Living area:
5950 mm x 9600 mm
Bedroom 1:
6430 mm x 3130 mm
Balcony:
4.6 sq.m / 50 sq.ft

