



Wat Tyler Road, Blackheath SE10
£1,450 Per calendar month

Description:

Two bedroom unfurnished second floor flat in a fantastic location on the edge of the Heath. Blackheath Village is a walk across the Heath (0.8 miles). For commuters you are spoilt for choice with Lewisham rail and DLR station only 0.6 miles or Elverson Road DLR station is also 0.6 miles.

The flat is well proportioned with a good size lounge that has a balcony with views of the Heath. The kitchen comes with appliances. Both bedrooms have built in wardrobes. The bathroom has a shower over the bath and there is a separate toilet. There is also a garage. Available from 21 December 2015. Council tax Band D EPC Rating C.



Directions: From Blackheath Village head up Tranquil Vale. At the mini roundabout turn left into Hare & Billet Road. Go across the Heath and at the mini roundabout turn left into Wat Tyler Road. Greyladies Gardens is then on the right.

Tenure: Leasehold - share of freehold

Lease term years from

Ground Rent:

Service Charge:

Council Tax Band: D-£1,355.35

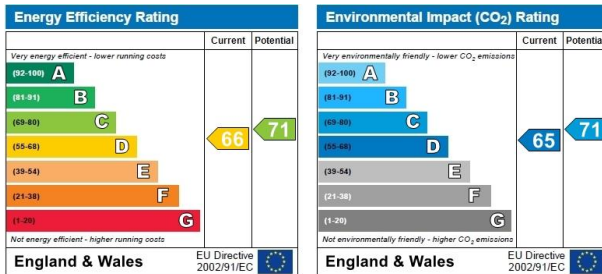


Room Dimensions:

Entrance Hall	
Living Room	18 x 11
Kitchen	14'4 x 6'6
Bedroom 1	14'7 x 10'11
Bedroom 2	14'7 x 7'3
Bathroom	
Cloakroom	
Balcony	



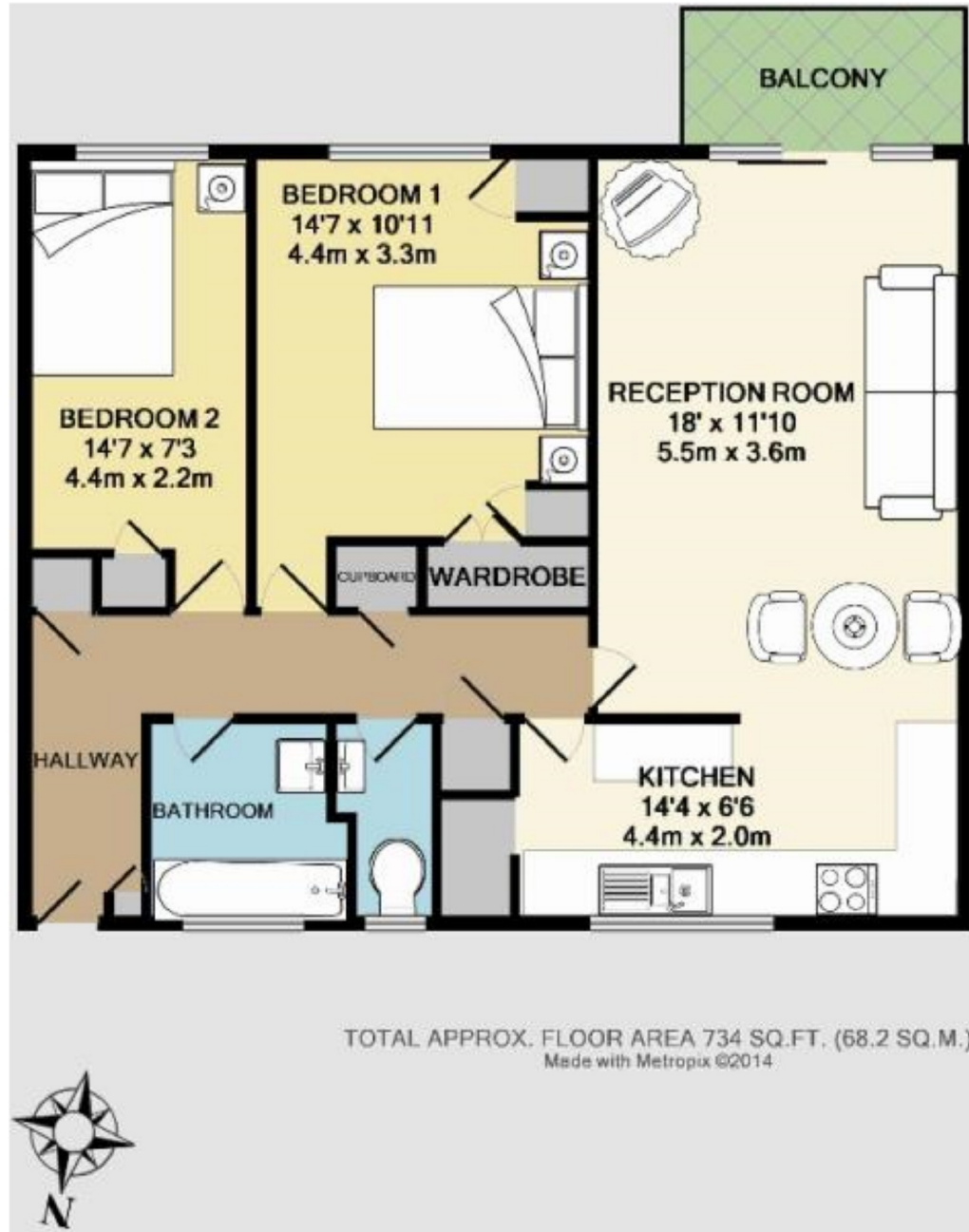
Please refer to www.jdmestateagents.com to see our full Area Guides.



Please contact the branch for a complete copy of the EPC document



Floorplan



IMPORTANT NOTICE

jdm must advise that although every effort has been made to ensure the accuracy of these details they form no part of any contract and are issued without any responsibility on the part of the agents or vendor. Photographs may have been taken using a wide angle lens. Any floor plans shown are not to scale. All measurements, walls, doors, windows, fittings and appliances, their sizes and locations are shown conventionally and are approximate only. Any reference to alterations or particular use of the property wherever stated, is not a statement that planning, building regulations or other relevant consent has been obtained. We have not carried out a survey of the property nor have we tested any services, systems or appliances at this property. We strongly recommend that all the information we provide is verified by yourselves on inspection and by your Surveyor and Solicitor or Legal Adviser.

jdm recommends Independent Mortgage Advice. For help with your mortgage please contact your local branch. Your home may be repossessed if you do not keep up repayments on your mortgage. Written quotations available on request.

jdm Blackheath Village

36 Montpelier Vale, Blackheath, London SE3 0TA

020 8463 0091 e bh@jdmonline.com



jdm
LETTINGS