



2



1



1

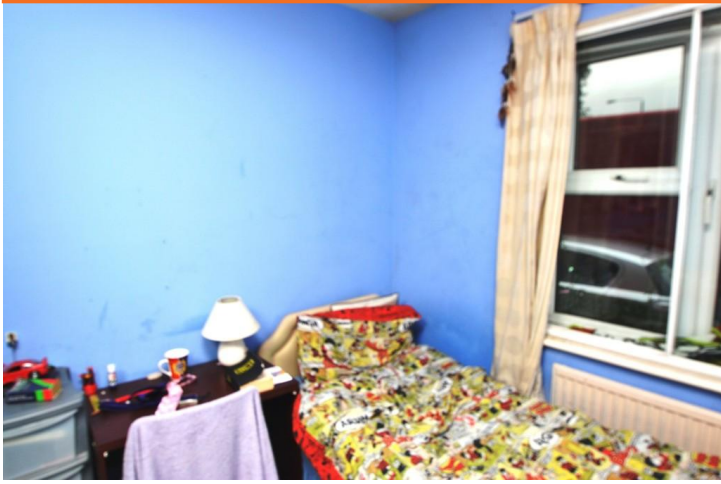


Sheepcote Road | Harrow | HA1 2JS

Rent £1,250 pcm

We are pleased to offer this recently redecorated two bedroom ground floor flat which benefits from a 17'2 x 11'8 living room, a separate 15'5 x 7'4 fully fitted kitchen, 12'5 x 12'4 bedroom one and 9'6 x 9'6 bedroom two. The property has gas central heating and double glazed, entry phone system, permit parking in development. Available 30/11/2015. Furnished. Sheepcote Road is situated is approximately 250 yards from Harrow's multiple shopping centres and approximately 3/4 mile from Harrow-On-The-Hill Metropolitan Line tube station.

- TWO BEDROOM PURPOSE BUILT FLAT
- GROUND FLOOR
- NEWLY DECORATED
- 17'2 X 11'8 LIVING ROOM
- 15'5 X 7'4 SEPARATE KITCHEN
- 12'5 X 12'4 BEDROOM ONE & 9'6 X 9'6 BEDROOM TWO
- GAS CENTRAL HEATING & DOUBLE GLAZED



EPC To Follow