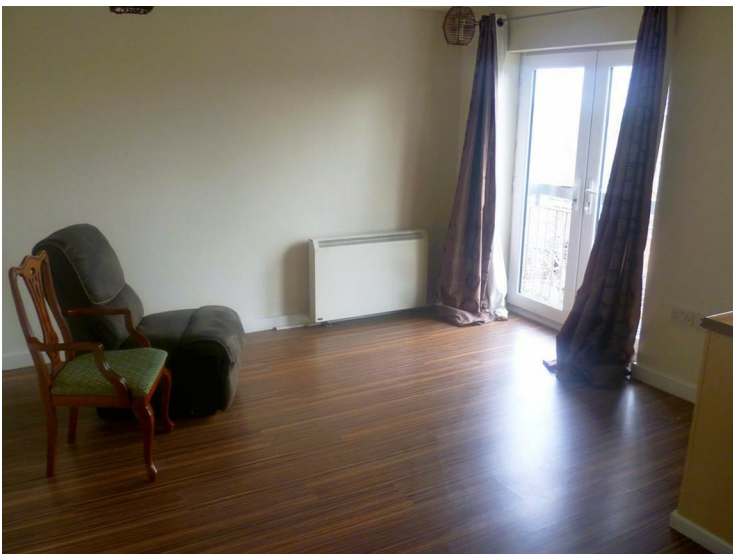


Quince House, Salford, M6 5RL



£550 Per month

Just like the fruit this is a juicy rental not to be missed. Quince House is appealing in many ways, it has a roomy open plan living room / kitchen with french doors to the living room, great to whip open on a summers eve and the kitchen has used the space well offering you a good size with modern functionality, there are two bedrooms one nicely sized double and a single, a bathroom and a smaller area that would be ideal for a study. Sitting on the 3rd floor of the development you have a high up view overlooking the car park (which you have a space in) and beyond. The smaller development also has lift facilities so don't let the 3rd floor put you off as you can bob up and down till your hearts content and not even break a sweat. Now for the location and its a bit handy, you are within a skipping distance of Salford University, not to mention the A6 that runs directly into Manchester City Centre. For public transport you can jump on several of the buses that fly past in this area or you can head over to Salford Crescent train station, I told you it was handy. If you are looking to be on the edge of town without the price tag then this is the one for you. AVAILABLE NOW! *FEES APPLICABLE PLEASE CONTACT THE OFFICE*

External



Living Room



Kitchen



Bedrooms



Bathroom



