

Boundary Court, Ellenbrook, M28 1NY



£550 Per calendar month

Setting boundaries in life is a good thing...and we think Boundary Court is also a good thing. Where to start?! Set in a marvellous location you have a mini charming high street right on your doorstep with a local convenience shop, two take away's (which are highly rated in the area) and a doctors / pharmacy, I feel like convenient doesn't even sum this up enough. Venturing a touch further you have a Boothstown and Worsley Village which are two heavy weights in the popular locations this side of Manchester, with quaint cottages, lovely inviting public houses and plenty of outdoor woods walks you are certainly in good company here. Better linked than ever with public transport as we now have the park and ride running from A580 in Worsley with a dedicated bus lane heading straight into Manchester City Centre and your nearest train station is Walkden. Car links are accessible too as mentioned the A580 is literally minutes away which can take you to the M60 and M602 motorway.

Now for the property which is a real pleasant modern apartment sat on the 1st floor of this smaller development. There is a nicely sized living / dining room, the modern kitchen is set just off from here, there are two bedrooms with the main bedroom having some cracking storage with a fitted wardrobe and cupboards, a nicely tiled bathroom and right outside you have an allocated parking space. In summary we think that Boundary Court is a sound, solid rental! AVAILABLE NOW! *FEES APPLICABLE PLEASE CONTACT THE OFFICE*

External



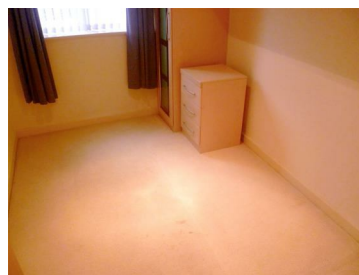
Kitchen



Living Room



Bedrooms



Bathroom



