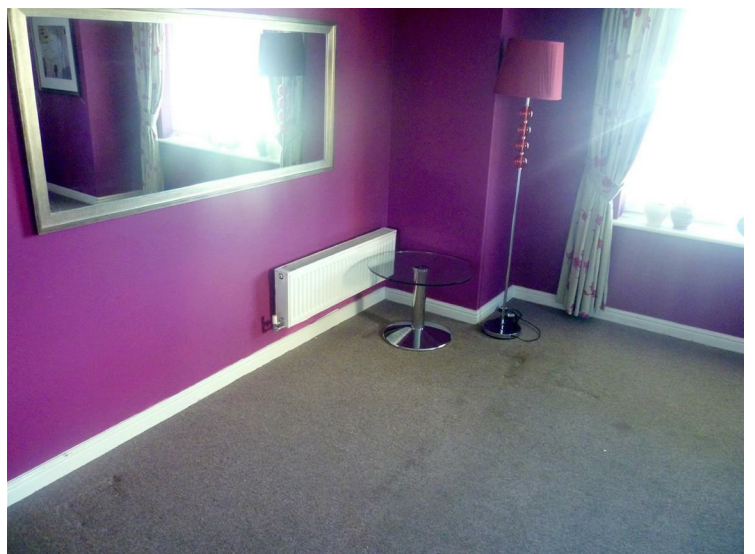
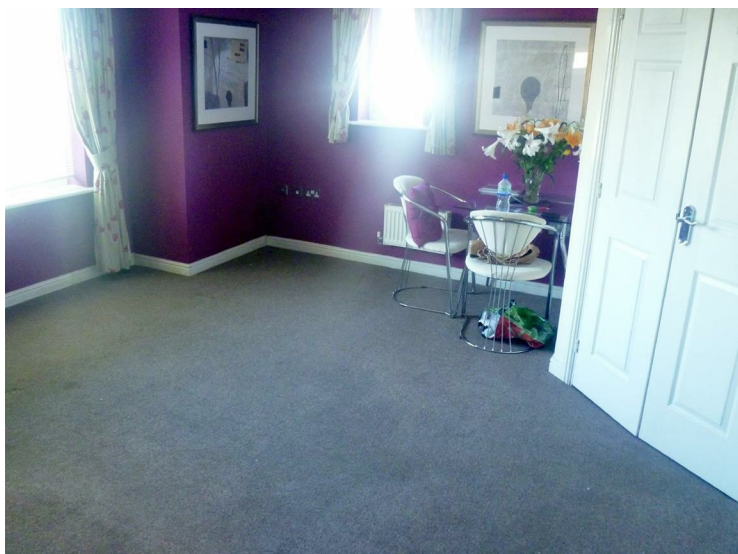
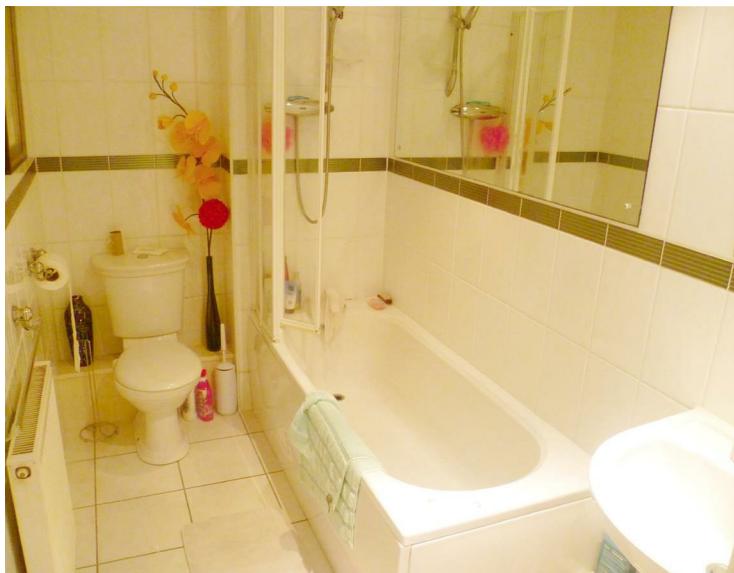


Pinhigh Place, Salford, M6 8ND



£550 Per calendar month

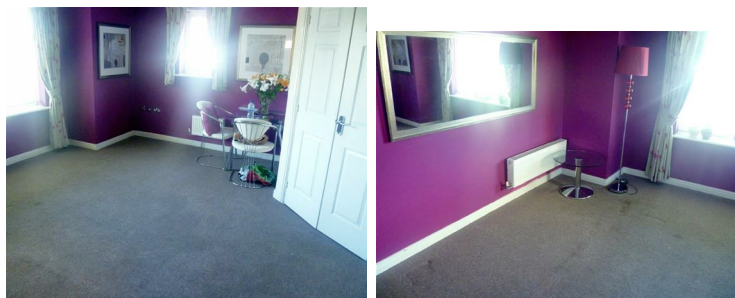
Pin High Place is as popular as they come, it sits in the highly sought after locale of Salford 6 and is a stones throw away from Swinton Park Golf club hence the name Pin High. Now you don't need to be a keen golfer to live here you just need to be keen on the property...which really shouldn't be hard. This apartment sits on the ground floor and offers you secure entry for peace of mind. Internally you will find a cosy living room, with a bright modern kitchen, two pleasantly sized bedrooms and a tiled bathroom. Travelling from here should be a breeze as moments away you have the A580 that takes you directly into Manchester City Centre, along with good bus links. Over the road and not too far away you will find Oakwood Park which is a lovely green park perfect for open air goings - on. As previously stated this a well revered development within the area and we sure that it wont hang around for too long. AVAILABLE BEGINNING OF MAY! *FEES APPLICABLE PLEASE CONTACT THE OFFICE*



External



Living Room



Bathroom

