



CAPITAL BUILDING, EMBASSY GARDENS
£820 PER WEEK



A tenth floor exquisitely furnished apartment of 935 sq ft, with secure parking and sizeable terrace, available for immediate lease in The Capital Building, Embassy Gardens.

Designed to the highest specification, the apartment boasts high ceilings, walnut parquet flooring, private patio, comfort cooling and abundant natural light reminiscent of a Manhattan loft apartment. Located on the banks of the Thames and near London's cultural South bank, residents not only enjoy a wealth of the Capital's finest attractions and amenities practically on their doorstep but also premium residents facilities including an exclusive private club and health spa.

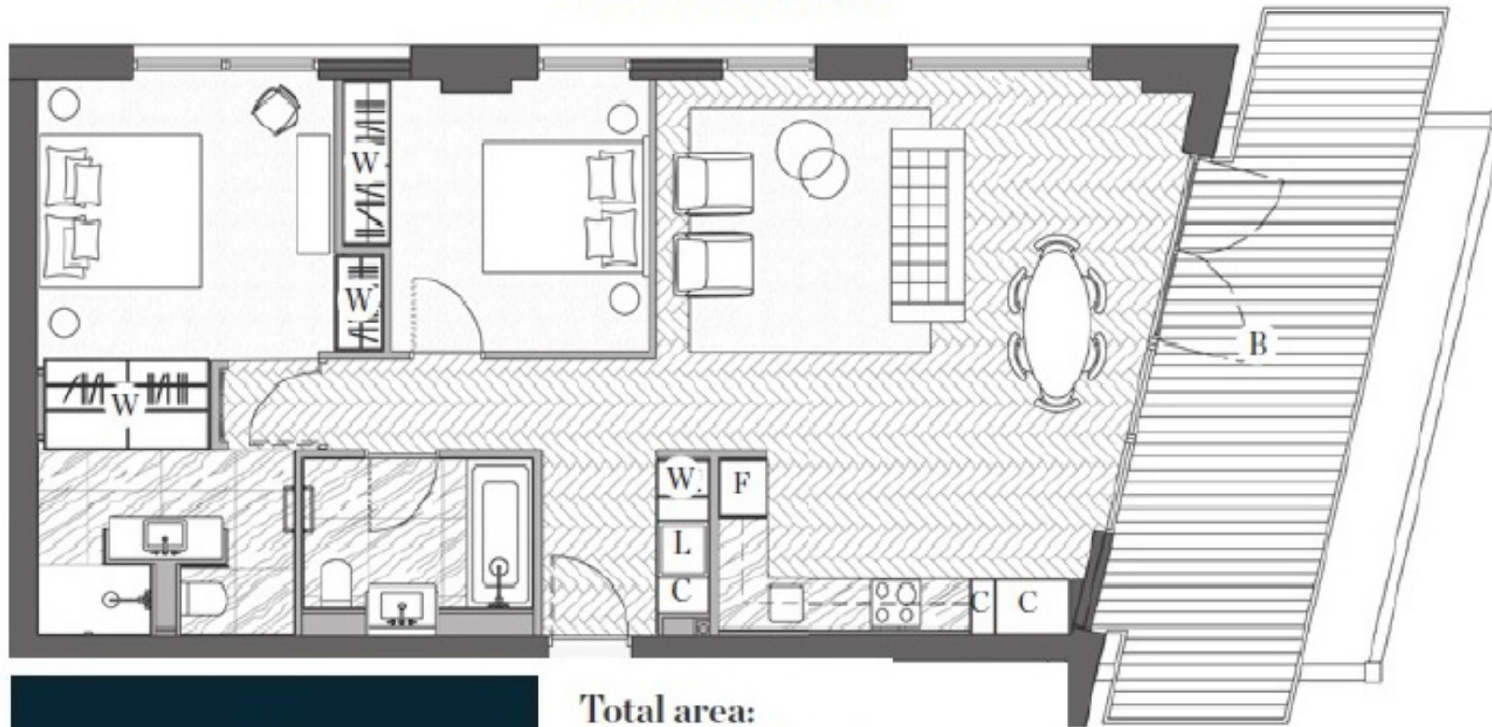
To view immediately through Prime London.







CAPITAL BUILDING, EMBASSY GARDENS, LONDON SW8
TENTH FLOOR



PRIME LONDON

Total area:
86.9 sqm / 935 sqft

Living area:
6525 x 5980 mm

Bedroom 1:
3945 x 3635 mm

Bedroom 2:
3735 x 3245 mm

Balcony:
19.9 sqm

