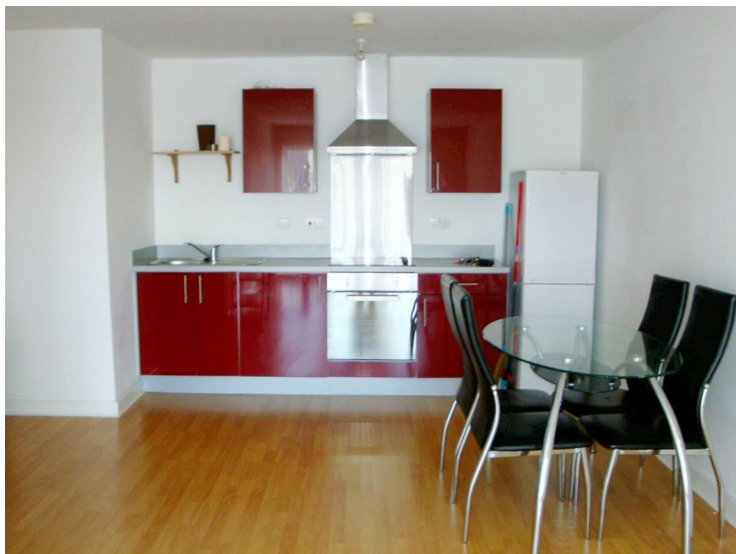


Ladywell Point, Salford, M50 1AU



£595 Per calendar month

Well well well what do we have here?! Ladywell Point is what we have here and it's rather nice. This is a modern development with tonnes of positives to boast about, so I shall, there is a tram stop directly outside the building which can have you in trendy Salford Quays within minutes and a little further on you will reach the ever cool Manchester City Centre, not only does it pretty much have its own tram stop, there are also really good train and bus routes too and the M602 is on hand for all drivers to dash about with ease, there are lift facilities within the development for those of us who may need extra help bobbing between floors and it really does feel like city centre living without being in the centre. Now for the apartment, it offers you two true double bedrooms which makes it perfect for sharing or just to have that extra space, there is a through living / kitchen area which has a sleek contemporary look, a nicely sized modern bathroom, an en suite shower room and an allocated parking space. The location and apartment are both fantastic, this is a great rental property on the edge of the Salford Quays area but with a reasonable price tag. AVAILABLE BEGINNING OF JUNE! *FEES APPLICABLE PLEASE CONTACT THE OFFICE*

External

Open Plan Living / Kitchen



Bedrooms



Bathroom



En Suite



