



**ROMAN HOUSE, THE CITY**  
**£750 PER WEEK**



An excellently positioned south facing two bedroom apartment, with all rooms offering a garden aspect, in this landmark building in the heart of the City of London. The property is available occupation from mid July. This apartment benefits from high specification finishes, under floor heating, a resident's only gymnasium and a 24 hour concierge service.

Roman House has recently undergone a full refurbishment to reflect the modernist heritage of the current building, retaining its stunning Portland stone facade and the interiors, designed by The Manser Practice, have been inspired by the original piece of Roman Wall adjacent to the development.

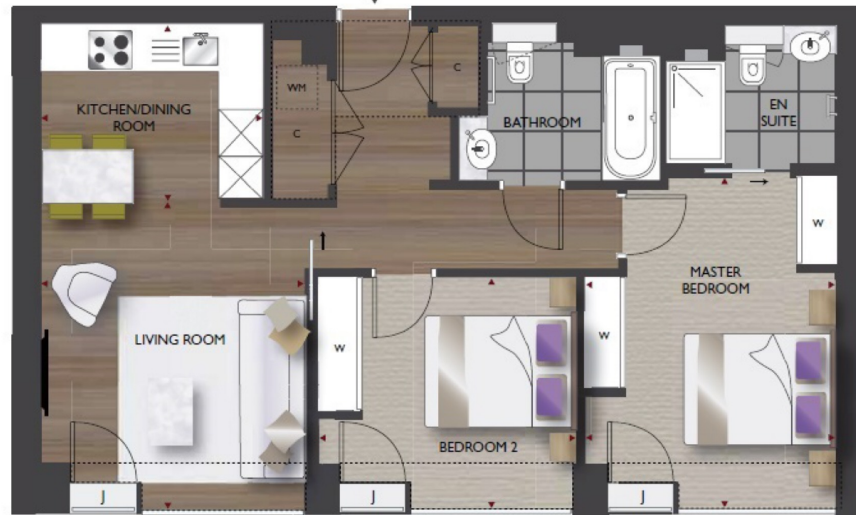
Residents can be anywhere within the Square Mile in minutes. Moorgate gives access to London Underground, and with London's Crossrail high speed link coming soon, links to Stratford City, the West End and Heathrow will be faster still.

London's main international airports can all be reached in under an hour. The Eurostar terminal is only ten minutes away by Tube, putting Paris or Brussels just over two

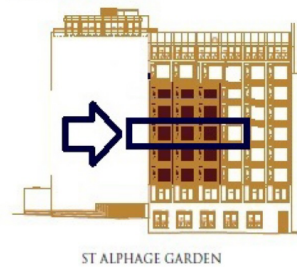




**ROMAN HOUSE, THE CITY, LONDON EC2Y**  
**SECOND FLOOR**  
**GROSS INTERNAL AREA 754 SQ FT / 70.08 SQM**



SOUTH ELEVATION



NORTH

