



**THE CORNICHE, 20 ALBERT EMBANKMENT,  
£695,000**





Offering the best value on site, a 584 sq ft third floor one bedroom apartment, available for off-plan purchase in The Corniche, 20 Albert Embankment, for completion in 2017.

Located in an enviable position on the bank of the River Thames, The Corniche (designed by Foster & Partners) captures some of London's most exquisite views, not only of the Houses of Parliament and the River Thames, but also the Tate Britain, London Eye and the City.

The development includes extensive residents facilities including a restaurant, gym, spa, pool and cinema, and also commercial spaces such as restaurants and cafes focused around a well considered and inviting public space.

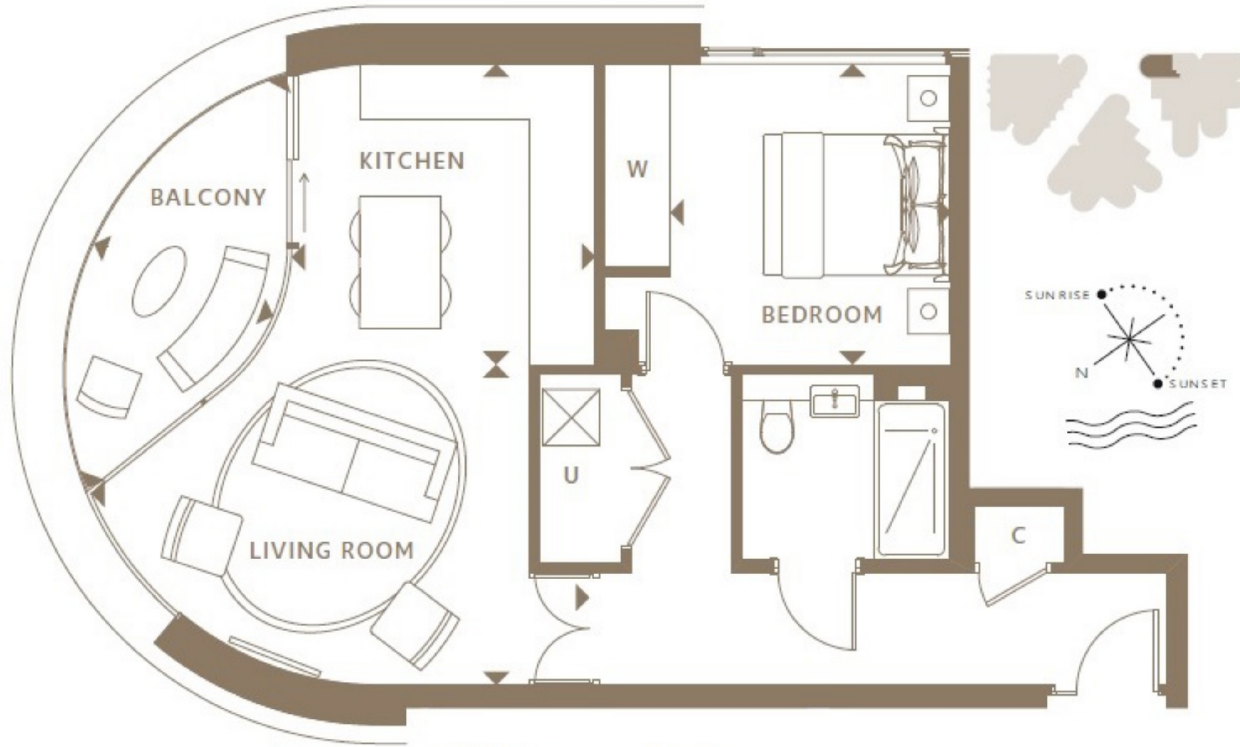








**THE CORNICHE, 20 ALBERT EMBANKMENT  
THIRD FLOOR**



Living Room	5.29 x 3.40m	17'4" x 11'2"
Kitchen	3.22 x 3.19m	10'7" x 10'6"
Bedroom	2.98 x 3.19m	9'9" x 10'6"
Balcony	4.84 x 2.01m	15'11" x 6'7"
<b>Total Internal Area</b>	<b>54.25 m<sup>2</sup></b>	<b>583.9 ft<sup>2</sup></b>
<b>Total External Area</b>	<b>6.24 m<sup>2</sup></b>	<b>67.1 ft<sup>2</sup></b>

