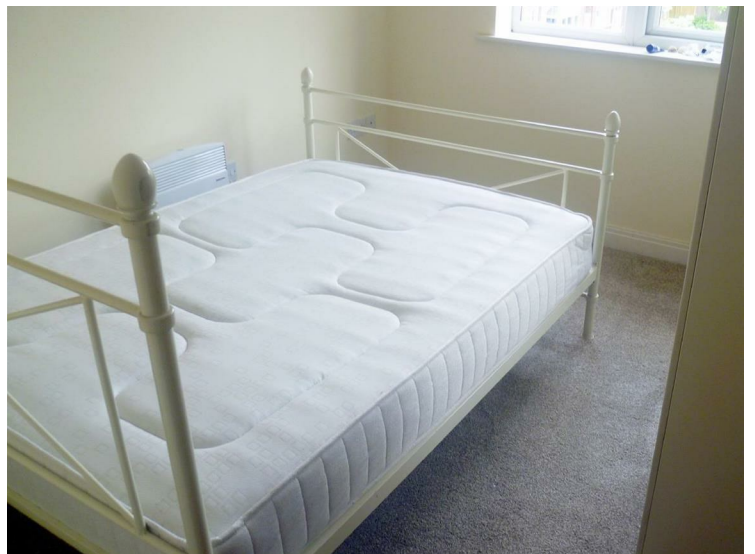


## Ellesmere Green, Manchester, M30 9EZ



**£600 Per calendar month**



Ellesmere Green is in bloom all year round in an attractive setting, sat facing the conservation area of Ellesmere Park which is steeped in history, this is an affluent area and a much desired part of Salford. Rubbing shoulders with Monton Village you can find yourself sipping afternoon tea (pinky up), drinking a mix of fabulous cocktails or eating a scrumptious meal on the bustling village high street. You have plenty of transport options here, there are several buses that run through the village and the train and metro can be caught from Eccles Town Centre, the M602 also runs near by too. For your everyday amenities you cant go wrong in Eccles, there's the usual high street shops and major supermarkets. So, now that we have established that the location is pretty perfect let me take you on a tour of the property. Ellesmere Green is a beautiful modern apartment that has recently undergone redecoration. The living room is a well sized and bright space, the modern kitchen is attractive and of a perfectly usable size, there are two bedrooms both with an air of radiance and a nicely tiled bathroom. To the rear of the development there is off road parking and you have secure entry for that extra piece of mind. This apartment offers a beautiful home for the lucky person who get's it, don't miss out or you may be left green with envy. **AVAILABLE NOW! \*FEES APPLICABLE PLEASE CONTACT THE OFFICE\***

### External



### Living Room



### Kitchen



### Bedrooms



### Bathroom





