





A spacious, well presented two bedroom apartment situated in this grand detached period property!

Located just half a mile from the tranquil Greenwich Park and just over half a mile from the popular and vibrant Blackheath Village.



%epcGraph_c_1_326%

Please refer to

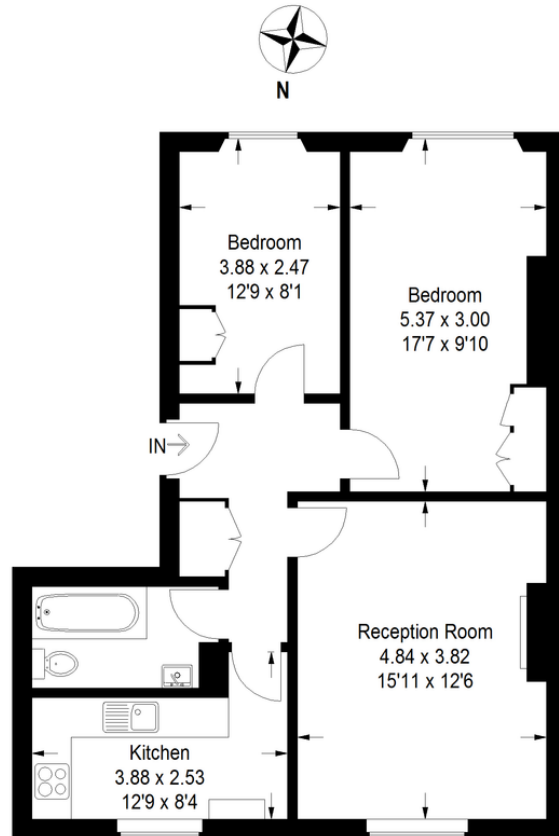
www.jdmestateagents.com

to view our full area guides



Shooters Hill Road

Approximate Gross Internal Area
65.9 sq m / 709 sq ft



Ground Floor

Illustration for identification purposes only,
measurements are approximate, not to scale.
FloorplansuSketch.com © 2016 (ID262241)

