



CAPITAL BUILDING, EMBASSY GARDENS
£700 PER WEEK

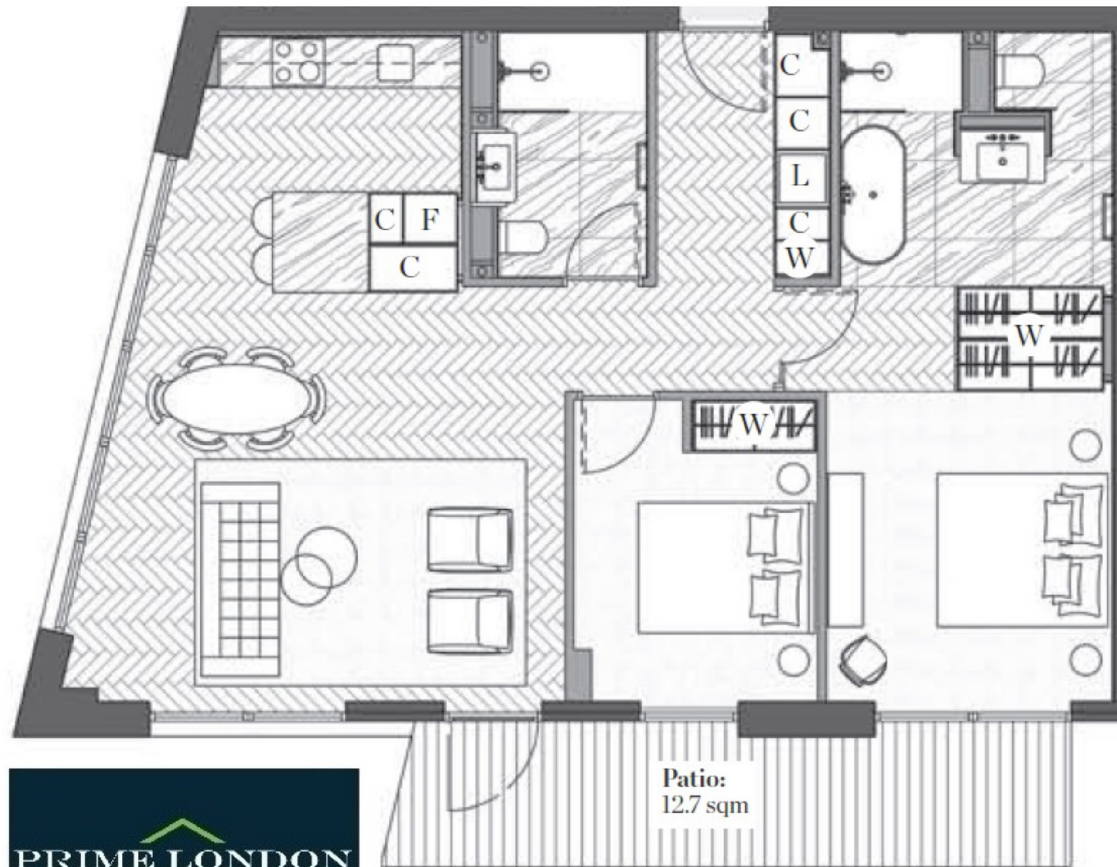


A brand new and exquisitely furnished apartment of 943 sq ft, with secure parking, available for immediate lease in The Capital Building, Embassy Gardens. Designed to the highest specification, the apartment boasts high ceilings, walnut parquet flooring, private patio, comfort cooling and abundant natural light reminiscent of a Manhattan loft apartment. Located on the banks of the Thames and near London's cultural South bank, residents not only enjoy a wealth of the Capital's finest attractions and amenities practically on their doorstep but also premium residents facilities including an exclusive private club and health spa. To view immediately through Prime London.





**CAPITAL BUILDING, EMBASSY GARDENS, LONDON SW8
SECOND FLOOR**



Total area: 87.6 sqm / 943 sqft **Living area:** 7825 x 5050 mm **Bedroom 1:** 4270 x 3285 mm **Bedroom 2:** 3590 x 2820 mm

