

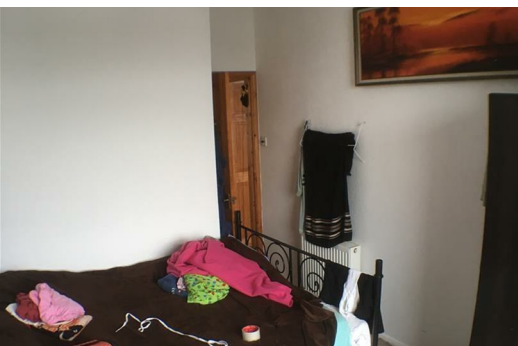


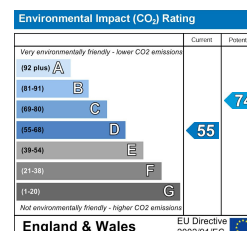
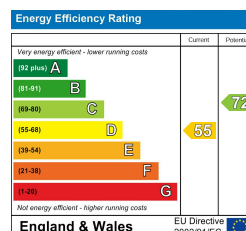
**Mount Wise, Newquay**  
**Cornwall TR7 1QR**  
**£670 Per Month**

Key Features

- \* Gas Central Heating & Water bill included in rent.
- \* Off Road Parking
- \* Fully tiled Bathroom.
- \* Open Plan Lounge Kitchen / Diner.
- \* White goods included.
- \* Launderette on site.
- \* Fully Double Glazed.
- \* 2 Double Bedrooms
- \* Rent is only £670 per month

This is your chance to rent a spacious modern 2 bedroom apartment in central Newquay.





29 Commercial Street, Swindon, SN1 5NS

Tel: 01793 535777 Email: sales@swindonhomedirect.co.uk Web: www.swindonhomedirect.co.uk