



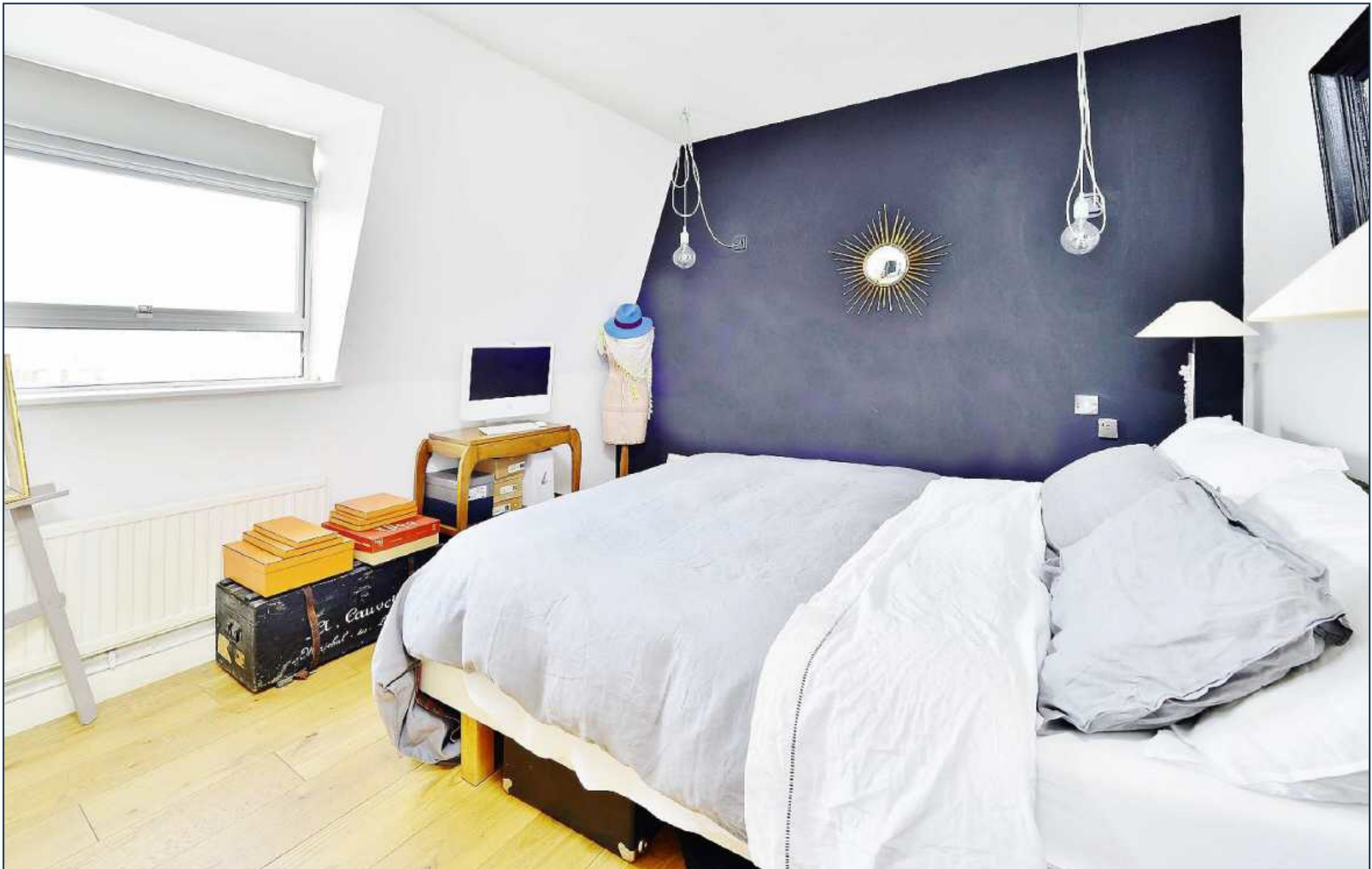
MACREADY HOUSE, MARYLEBONE
£795 PER WEEK



A fully refurbished and very bright two bedroom apartment on the top floor (with lift) of Macready House, available for long term letting on an unfurnished basis from late September.

This south-facing apartment, the only style in the building to offer balcony space, is situated in this attractive building on the corner of Crawford Street and Seymour Place. The development has recently undergone a full refurbishment and offers communal gardens, 24 hour portage and a private gym for the residents.





Macready House W1
Gross Internal Area: 746 Sq. feet 69 Sq. metres
Sixth Floor

