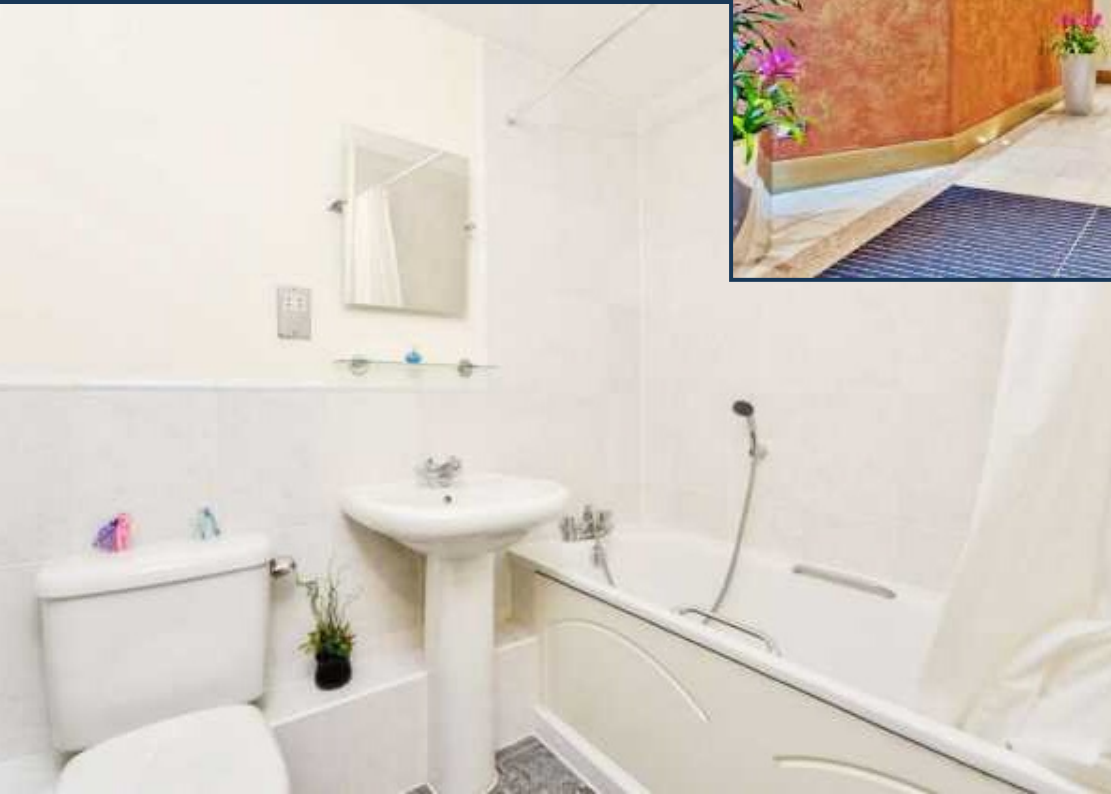




**BRIDGE HOUSE, ST GEORGE WHARF**  
**£525 PER WEEK**

A sizeable and excellently maintained 764 sq ft two bedroom (master with en suite) apartment, available for immediate long term let in St George Wharf. This apartment benefits from the fantastic transport links afforded by this very well kept complex by The River Thames. Within, there are restaurants, bars, coffee shops, Gym, pharmacy and Tesco Express. Available to view via sole agents Prime London.







**BRIDGE HOUSE, ST GEORGE WHARF, LONDON SW8**  
**APPROXIMATE GROSS INTERNAL AREA 764 SQ FT / 71 SQM**

