

Gresham Court, Bolton, BL1 8PS



£450 Per calendar month

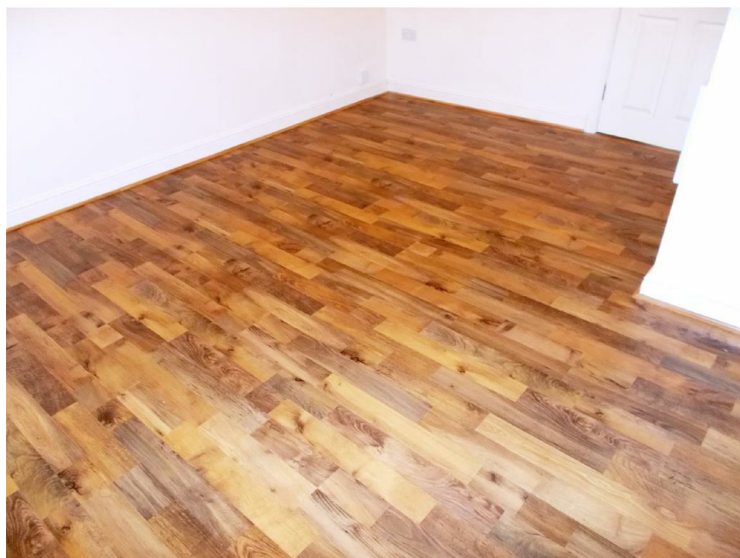
Aptly named Gresham Court as it sits on Gresham Street, is this modern small block of six apartments. Sat within a real pleasant residential area that is ideally located within a few minutes of Bolton Town Centre, which has an abundance of old northern charm mixed with the new, more modern high street shops making this a great town centre to be close to. The A666 and the A58 run near to the apartment allowing for ease when darting around in the car, along with reasonable public transport links for those who prefer to communally travel. Not too far from the town centre you can find yourself out in the hills, meandering and overlooking Bolton, where you really can see breathtaking views. The apartment itself is bright, pleasant and quite spacious, the open plan living / kitchen area is a good size (with integrated appliances, a fridge, stainless steel oven and hob with extractor) and two nice bedrooms along with a very usable bathroom and a parking space. In summary there really isn't much more you need from a home. AVAILABLE BEGINNING OF SEPTEMBER! *FEES APPLICABLE PLEASE CONTACT THE OFFICE*

Open Plan Living / Kitchen



Bright, neutrally decorated, with a modern kitchen, oak wall and base units and a grey work surface. Feature french doors.

Bedroom One



Laminated flooring, neutral decoration, suitable sized for a double bed

Bedroom Two



Neutral decoration, carpeted floor.

Bathroom



White bathroom three piece suite. Vinyl flooring.

External



