





Guide Price £350,000

An extremely well presented two bedroom first floor maisonette. The property is located in a popular road within easy reach of Bromley town centre.

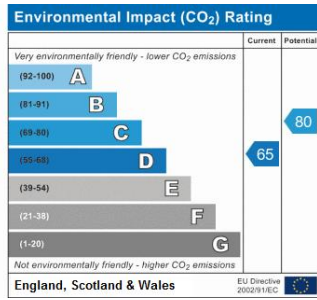
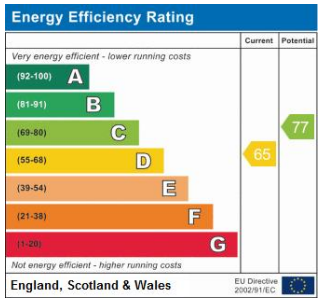
The property is accessed via a communal porch with its own front door opening to a ground floor entrance hall with stairs to the first floor. Benefitting from period features such as picture rails and a ceiling rose, the living room with oak flooring has a feature open fireplace and window to the rear. The kitchen is fitted with cream shaker style units with integrated appliances and space for a dining table.

The bathroom is fitted with a period style suite comprising bath with rain shower over, wc and wash basin and has been attractively tiled. The master bedroom with a bay window to the front has built in wardrobes and is neutrally decorated featuring high ceilings. The guest bedroom is bright and well presented with oak flooring and would make an ideal guest/single bedroom or study.



To the rear is a private garden accessed via your own back door, with decking, storage unit and rear access gate.

Viewings are highly recommended.

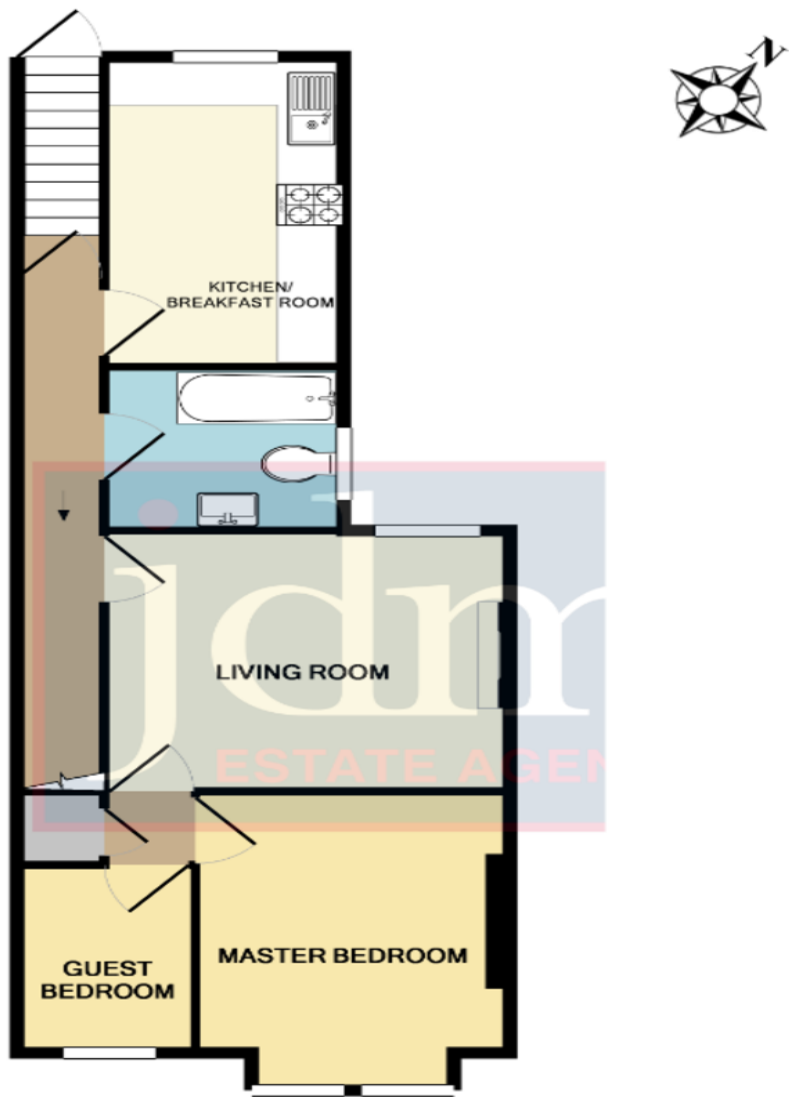


Please refer to

www.jdmestateagents.com

to view our full area guides





TOTAL APPROX. FLOOR AREA 571 SQ.FT. (53.1 SQ.M.)

Whilst every attempt has been made to ensure the accuracy of the floor plan contained here, measurements of doors, windows, rooms and any other items are approximate and no responsibility is taken for any error, omission, or mis-statement. This plan is for illustrative purposes only and should be used as such by any prospective purchaser. The services, systems and appliances shown have not been tested and no guarantee as to their operability or efficiency can be given

Made with Metropix ©2013

