





Guide Price £350,000

A well presented two bedroom ground floor maisonette including the Freehold for the ground and first floor properties. The property is located in a popular road within easy reach of Bromley town centre.

The property is accessed via its own front door opening to an entrance hallway. Benefitting from period features such as wood floors and a ceiling rose, the living room has a feature fireplace and built in storage space with shelves.

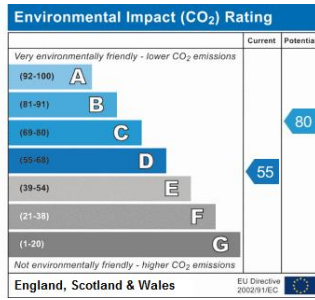
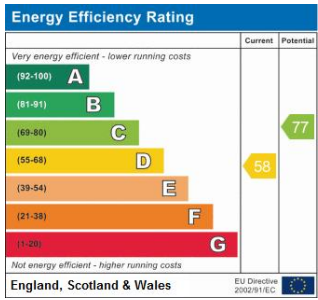
The master bedroom has a built in wardrobe and further storage and is neutrally decorated featuring high ceilings and the second bedroom is also presented with wood flooring.

The kitchen is fitted with a range of wall and base units, gas cooker, under counter oven and further space for dishwasher, washing machine, dryer and fridge/freezer. The kitchen further benefits include space for a dining table and French doors leading to the rear garden.



The bathroom is fitted with a white suite comprising bath with rain shower over, wc and wash basin and has been attractively tiled. To the rear is the private garden and includes patio, storage unit and rear access gate.

Viewings are highly recommended.

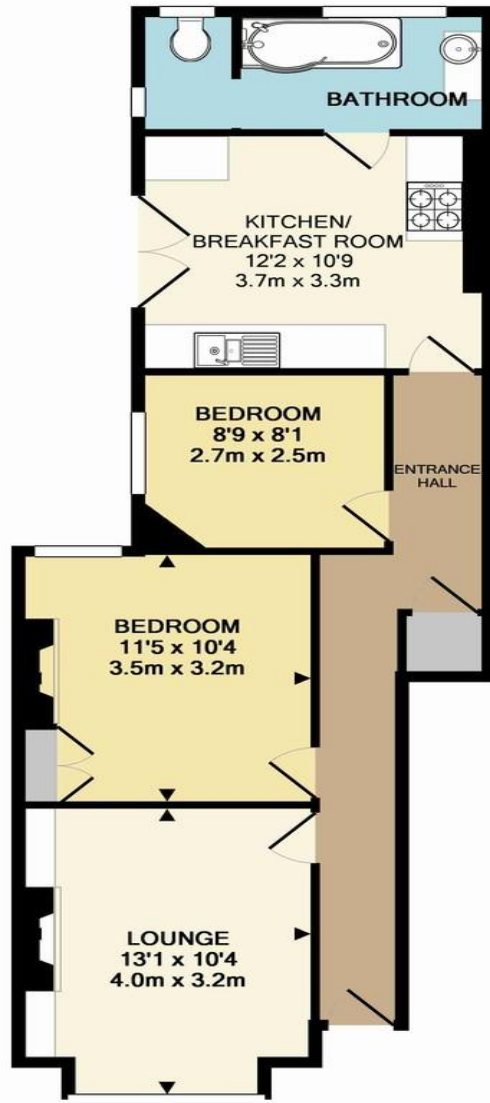


Please refer to

www.jdmestateagents.com

to view our full area guides





TOTAL APPROX. FLOOR AREA 681 SQ.FT. (63.3 SQ.M.)

Whilst every attempt has been made to ensure the accuracy of the floor plan contained here, measurements of doors, windows, rooms and any other items are approximate and no responsibility is taken for any error, omission, or mis-statement. This plan is for illustrative purposes only and should be used as such by any prospective purchaser. The services, systems and appliances shown have not been tested and no guarantee as to their operability or efficiency can be given
 Made with Metropix ©2016

