



Eltham SE9
£1,400 Per calendar month

jdm
LETTINGS

Description:

The wait is over! This newly constructed two bedroom semi detached house is now available to let. Designed to blend in architecturally, these houses are nestled in the popular Progress conservation area which proves popular with tenants and buyers due to the rural feel the estate provides and the close proximity to transport links and amenities.

We recommend taking a look in order to appreciate the space this property offers with two double bedrooms, family bathroom, large cloakroom and ample living/entertainment space with a spacious lounge/kitchen diner. Additional benefits include own garden and off street parking. Offered unfurnished but with incorporated appliances in the fitted kitchen.



Directions: Exit the A2 at the Rochester Way slip road, turn left onto Rochester Way heading towards Eltham. Approach the Well Hall Roundabout and take the first exit onto Well Hall Road, take the first left onto Downman Road.

Tenure: Freehold

Council Tax Band:

Local Authority:



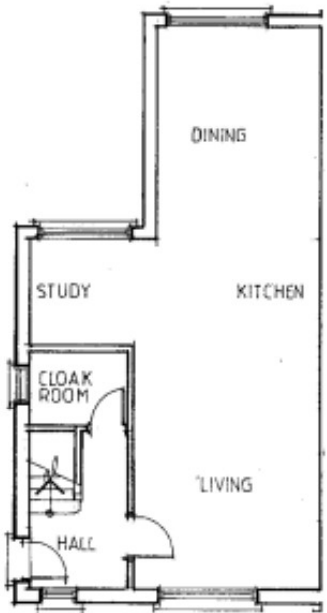
Room Dimensions:



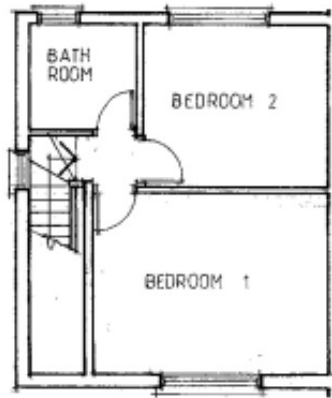
Please refer to www.jdmestateagents.com to see our full Area Guides.



Please contact the branch for a complete copy of the EPC document



GROUND FLOOR PLAN



FIRST FLOOR PLAN

IMPORTANT NOTICE

jdm must advise that although every effort has been made to ensure the accuracy of these details they form no part of any contract and are issued without any responsibility on the part of the agents or vendor. Photographs may have been taken using a wide angle lens. Any floor plans shown are not to scale. All measurements, walls, doors, windows, fittings and appliances, their sizes and locations are shown conventionally and are approximate only. Any reference to alterations or particular use of the property wherever stated, is not a statement that planning, building regulations or other relevant consent has been obtained. We have not carried out a survey of the property nor have we tested any services, systems or appliances at this property. We strongly recommend that all the information we provide is verified by yourselves on inspection and by your Surveyor and Solicitor or Legal Adviser.

jdm recommends Independent Mortgage Advice. For help with your mortgage please contact your local branch. Your home may be repossessed if you do not keep up repayments on your mortgage. Written quotations available on request.

jdm Blackheath Village

36 Montpelier Vale, Blackheath, London SE3 0TA

020 8463 0091 e bh@jdmonline.com



jdm
LETTINGS