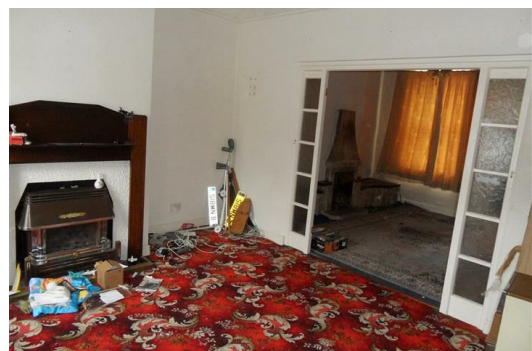




15, Haydock Street, Blackburn, Lancashire, BB1 9AE

BetterMove are pleased to present this two bedroom mid terrace property. This property benefits from gas central heating and double glazing. The property also features off road parking.



Living Room 13'11" x 13'4" (4.25 x 4.07)

Reception 11'2" x 11'10" (3.42 x 3.62)

Kitchen 8'9" x 7'1" (2.68 x 2.17)

Bedroom One 13'4" x 12'0" (4.07 x 3.68)

Bedroom Two 11'11" x 6'9" (3.64 x 2.07)

Bathroom 8'5" x 4'3" (2.57 x 1.32)

