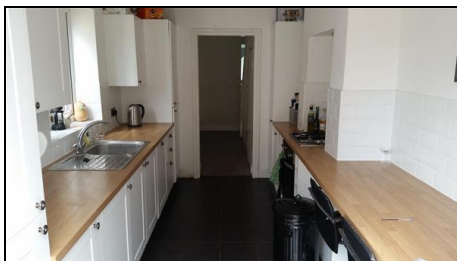




95 Pegwell Road Ramsgate

£ 210,000



- Two Bedrooms
- En suite to Master
- Sought after Location

- Lovely Rear Garden
- View today!
- Fitted Kitchen

Draft Details! Xpert Agents are proud to be marketing this beautiful Victorian home in the Village of Pegwell. The home has been well cared for by its current owners and gives you generous accommodation throughout. With two double bedrooms (en suite to Master) large family bathroom, lounge, dining room, fitted kitchen and lovely garden which is perfect for entertaining. There is everything you could possibly need close by, the beautiful Ramsgate Town center and Harbour, popular Chilton School and two public houses which just like this house offer relaxed sea views that you can enjoy all year round. Viewing is strictly by appointment only.

Lounge 4.62m (15'2") into bay x 4.27m (14'0") into recess
double glazed bay window to front, radiator, cupboard housing meters, tv point, archway to:

Diner 4.29m (14'1") in to recess x 3.33m (10'11")
Stairs to landing, radiator, understairs storage, wood frame double glazed door to garden, doorway to

Kitchen 4.22m (13'10") x 2.44m (8'0")
Fully fitted range of matching wall and base units with roll top work surface, inset stainless steel drainer unit with mixer taps over, integrated fridge/freezer, dishwasher and washing machine, cupboard housing boiler, 4 ring stainless steel hob with oven and extractor, breakfast bar, tiling to splash back, tiled floor, inset spot lights, double glazed window to side, double glazed doors to the garden

Garden
Raised decked seating area, outside tap, steps down to lawn, wall and fence perimeters, rear access.

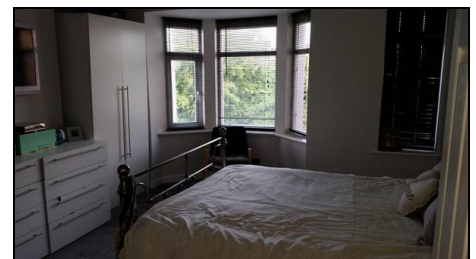
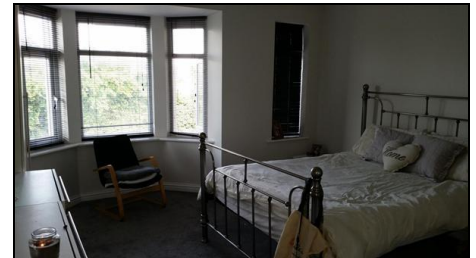
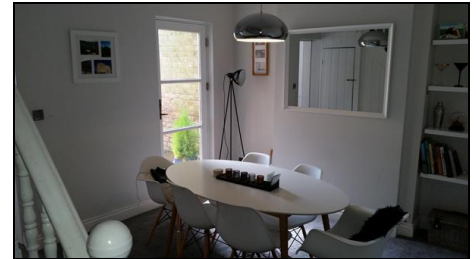
Landing
split level, loft access, doors to:

Bedroom 1 4.57m (15'0") into bay x 3.89m (12'9") chimney breast
Double glazed bay window to front with partial sea view, 2nd double glazed window to front, radiator, inset spot lights, radiator, door to

Ensuite
Tiled floor, tiled shower cubicle with glass door, wash hand basin, low level w.c., heated towel rail, inset spot lights, tiling to splash back

Bathroom
Low level w.c., wash hand basin with vanity unit, panelled bath with mixer taps over and shower extension and shower screen, double glazed frosted glass window to rear, part tiled walls, tiled floor, inset spot lights, heated towel rail.

Bedroom 2 4.42m (14'6") x 2.49m (8'2") into recess
Double glazed window to side and rear, cupboard housing water tank.



Energy Performance Certificate

