



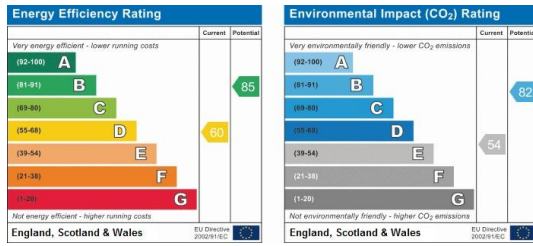


This delightful two double bedroom Victorian cottage is set in a quiet cul de sac and is close to both the local amenities and to the popular Edgebury Primary School.

The property has to the ground floor, two good size reception rooms and a well appointed kitchen in which some of the appliances will be remaining and a modern bathroom. The two bedrooms are upstairs and there is a private garden to the rear of the cottage and a little garden to the front behind a picket fence.

Offered in good decorative order, viewing is a must.





Please refer to

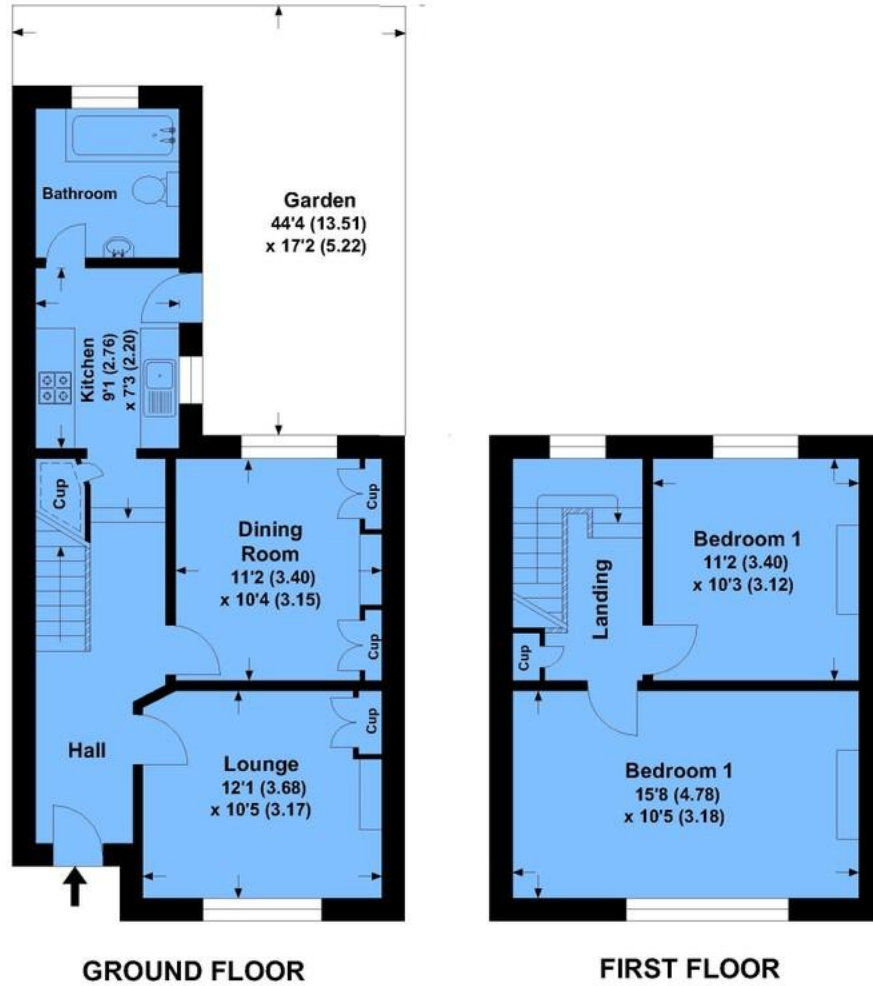
www.jdmestateagents.com

to view our full area guides



Belmont Road

APPROX. GROSS INTERNAL FLOOR AREA 802.55 SQFT / 74.56 SQM.



This is for guidance only, not to scale and must not be relied upon as a statement of fact. Attention is drawn to the notice on these particulars.

