



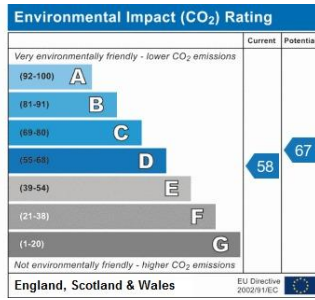
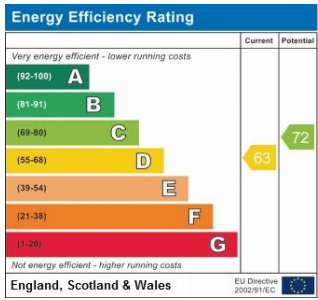


In the heart of the village sits this two double bedroom Victorian terrace cottage, offered to the market in excellent order. A fabulous contemporary kitchen and bathroom. Featuring a Wood burning stove in dining room and plantation shutters to the windows. The south west facing garden has double gates and parking.

The lounge is to the front and the dining room has double glazed French doors opening onto the decked patio area to the rear.

Only a short distance to the bustling village High Street shops and restaurants this property is a delightful example of a period cottage and your viewing is essential.





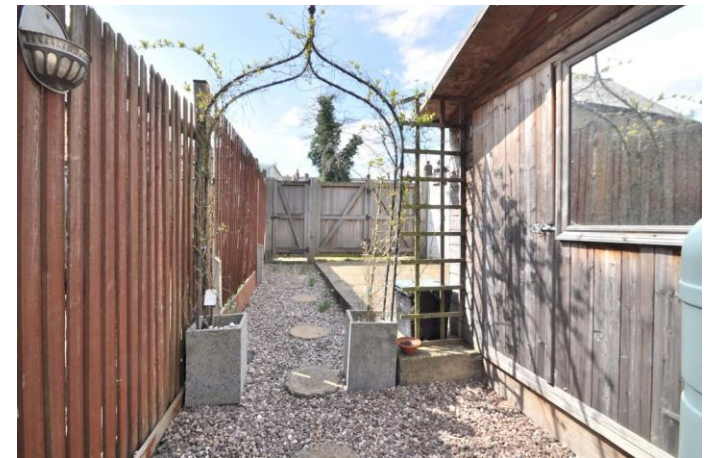
Please refer to

---

[www.jdmestateagents.com](http://www.jdmestateagents.com)

---

to view our full area guides



# Queens Road

APPROX. GROSS INTERNAL FLOOR AREA 759.93 SQFT / 70.60 SQM .



This is for guidance only, not to scale and must not be relied upon as a statement of fact.  
Attention is drawn to the notice on these particulars.

