





£425,000

A quaint workman's cottage indicative to the staff of the Emperor Napoleon III who resided at Camden Place some 130 years ago.

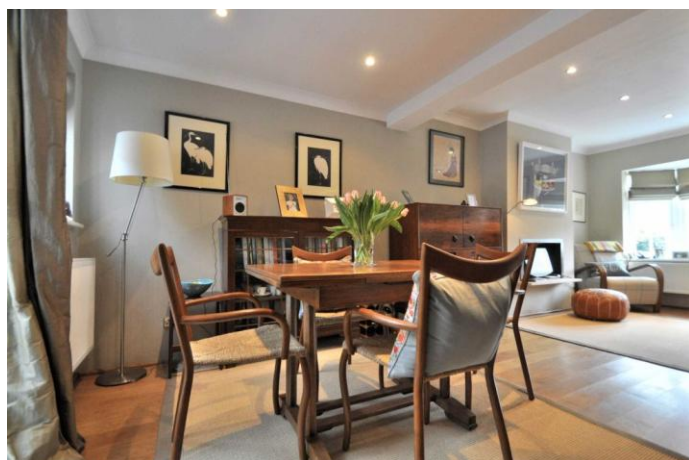
Retaining much of its charm from a bygone era, discerning purchasers will be pleased to observe that this lovely home has been beautifully presented by its current owners.

Features include a small entrance lobby which leads into a spacious lounge/dining room which is both light and airy. The small galley kitchen has been well appointed with a range of modern units making ingenious use of the available space. The first floor boasts two attractively presented bedrooms and a modern white bathroom.

Outside at the rear is a small courtyard and a small garden can be seen at the front.

The location is excellent being tucked away down a quiet side path within a half a mile of Chislehurst station, local shops and commons.

An early viewing of this end of chain house is essential to avoid disappointment.



Energy Efficiency Rating	
Current	Potential
Very energy efficient - lower running costs	
(92-100) A	
(81-91) B	
(69-80) C	
(55-68) D	
(39-54) E	
(21-38) F	
(1-20) G	
Not energy efficient - higher running costs	
62	90
EU Directive 2002/91/EC	
England & Wales	

Environmental Impact (CO ₂) Rating	
Current	Potential
Very environmentally friendly - lower CO ₂ emissions	
(82-100) A	
(61-81) B	
(39-60) C	
(15-58) D	
(1-38) E	
(1-20) F	
(1-20) G	
Not environmentally friendly - higher CO ₂ emissions	
59	90
EU Directive 2002/91/EC	
England & Wales	



Please refer to

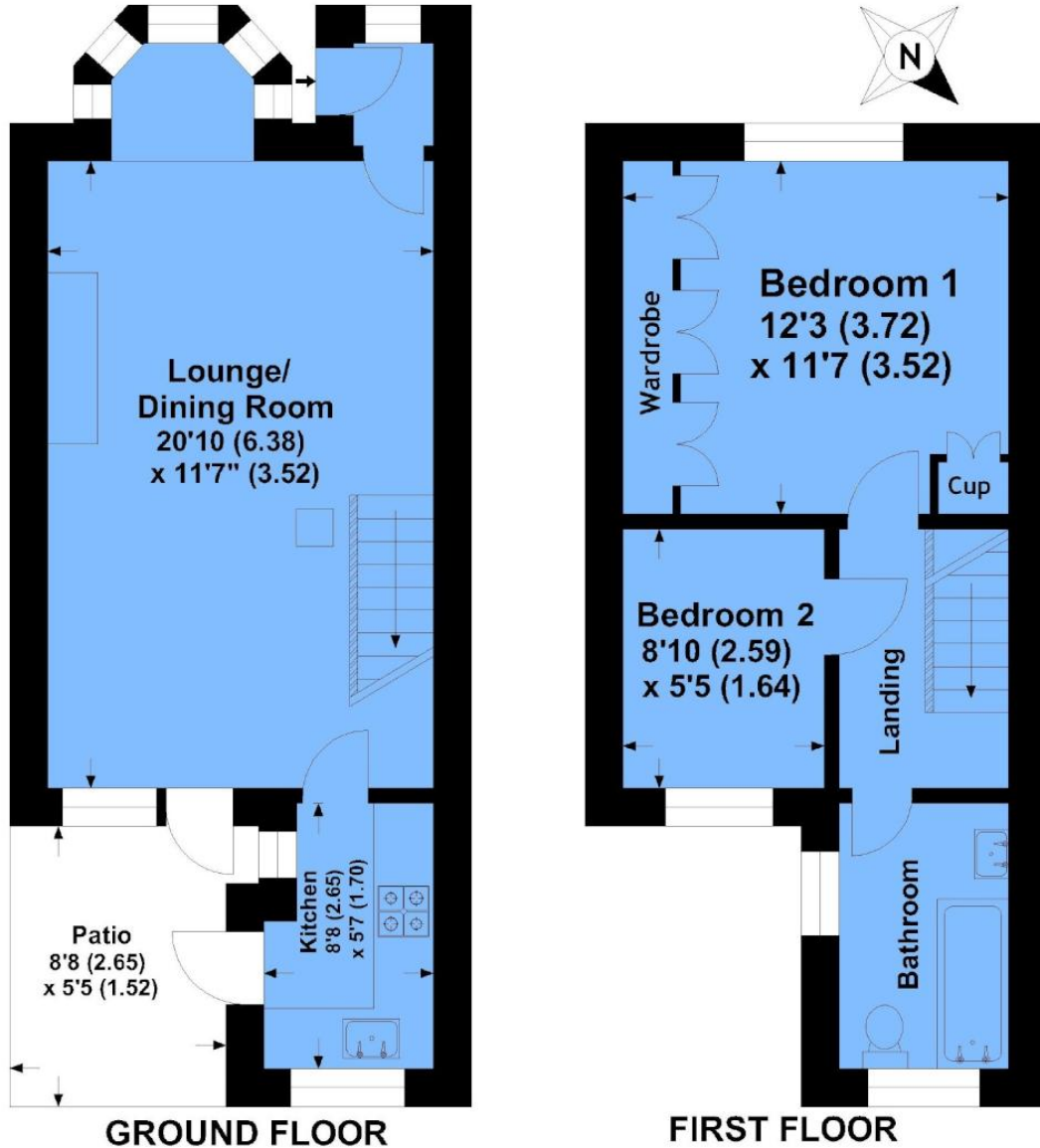
www.jdmestateagents.com

to view our full area guides



Mill Place

APPROX. GROSS INTERNAL FLOOR AREA 576.51 SQFT / 53.56 SQM.



This is for guidance only, not to scale and must not be relied upon as a statement of fact.
Attention is drawn to the notice on these particulars.

