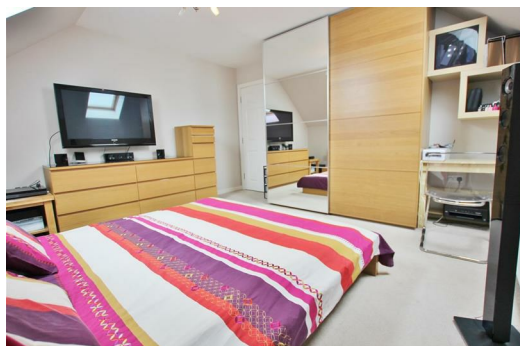




Flat 16, 148 Richmond Park Road, Bournemouth, Dorset, BH8 8DF

£189,950

An immaculately presented top floor apartment situated within a popular and convenient location. The property is located just moments from a bus stop and within walking distance a wealth of local bars, restaurants and shops on Charminster Road.

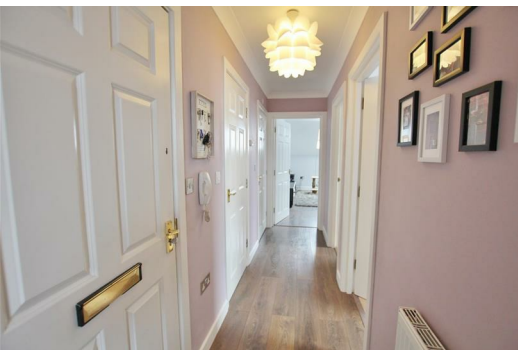


A secure intercom entry phone system gives access to the communal hallway, with stairs giving access to all floors. On entering the apartment a welcoming entrance hall gives access to all accommodation and to a useful storage cupboard.

A main selling point of this flat is a superb 15ft lounge with velux windows. The kitchen is fitted with a range of base and eye level units with space for appliances, which leads to two good sized bedrooms with again velux windows. To complete the accommodation you have a large fully fitted modern bathroom.

To the rear of the development there is allocated off road parking.

Leasehold, 92 years. Service charge approximately 500.
Ground rent 250.



Energy Efficiency Rating		Environmental Impact (CO ₂) Rating	
Band	Score	Band	Score
A	92-100	A	1-10
B	81-91	B	11-20
C	69-80	C	21-30
D	55-68	D	31-40
E	39-54	E	41-50
F	29-38	F	51-60
G	1-28	G	61-70