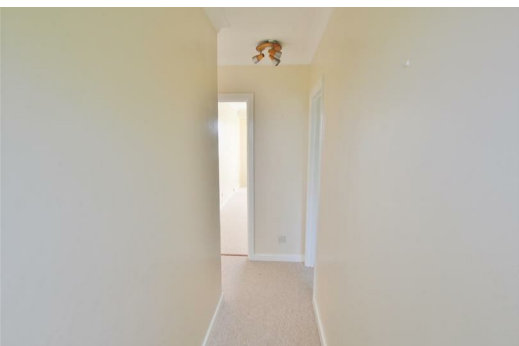




**Flat 29, Laburnum House Redhill Drive, Bournemouth, Dorset, BH10 6AF**

**£154,950**

A spacious, two double bedroom, top floor apartment with its own private entrance, garage and is offered with no onward chain. The property also offers a good buy to let opportunity or a great first time buy.



The property benefits from a spacious entrance hall, separate kitchen with space for appliances, two double bedrooms. Family bathroom with shower over the bath, storage cupboard. Being on the third floor you have fantastic views across the local area.

The property enjoys a sought after and convenient location which falls within the Hills View School catchment area. Ferndown's town centre is located less than four miles away and offers an excellent range of shopping, leisure and recreational facilities. Bournemouth offers an array of shops, restaurants and recreational facilities, as well as miles of award winning, sandy bathing beaches and is located approximately 3.5 miles away.

Tenure: Leasehold 999 years from 24th of June 1959

Maintenance charge: £199.36 per quarter



Energy Efficiency Rating		Environmental Impact (CO <sub>2</sub> ) Rating	
Current	Potential	Current	Potential
England & Wales <small>01 2030 200000</small>		England & Wales <small>01 2030 200000</small>	