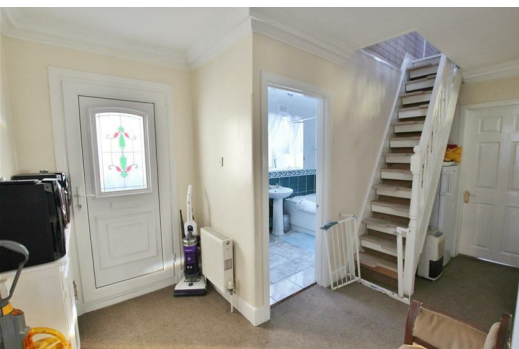




1636 Wimborne Road, Bournemouth, Dorset, BH11 9AJ

£284,950

A unique, spacious and well presented detached bungalow situated on a corner plot with front and side gardens which offer a good degree of privacy. The property is located in the popular area of Bear Cross.



The property benefits from newly fitted carpets throughout, large fitted kitchen and conservatory, separate dining room, spacious lounge and large loft room. Further benefits include a newly built garage and off road parking.

Bear Cross offers an excellent range of shopping, leisure and recreational facilities and is located approximately 2.5 miles away. Bournemouth offers an array of shops, restaurants and leisure facilities as well as miles of sandy bathing beaches and is located approximately 5.5 miles away. One of only eight in England, the National Park of the New Forest is just 7 miles away boasting nearly 600 square kilometres of protected countryside ideal for walking, cycling and country pubs. The property is just 3 miles from the main A31 dual carriageway trunk road which becomes the M27 approximately 15 miles to the North East. Bournemouth Train Station is just 5 miles away with trains direct into London Waterloo.



Energy Efficiency Rating		Environmental Impact (CO ₂) Rating	
Band	Score	Band	Score
A	92-100	A	1-23
B	81-91	B	24-47
C	69-80	C	48-71
D	55-68	D	72-100
E	39-54	E	101-150
F	21-38	F	151-200
G	1-20	G	201-250

England & Wales