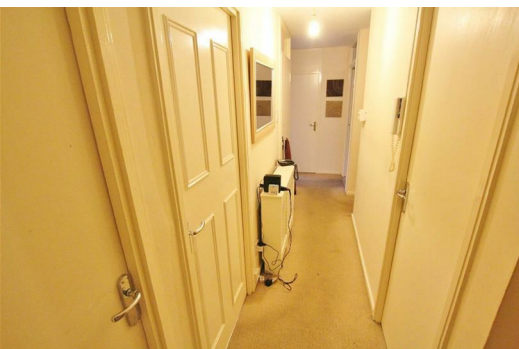




L3 Cornish Gardens, Ensbury Park, Bournemouth, BH10 4EJ

£160,000

A sizeable two bedroom purpose built first floor apartment in a character block, with the benefit of a large lounge dining room, and garage. Located in the sought after Ensbury Park ,BH10 area.



On Entry to the Apartment you are greeted with a large open entrance lobby that lends access to the accommodation.

A main selling point of this flat is a superb 14ft lounge, modern fitted kitchen with space for appliances, breakfast bar and integrated oven and hob, separate WC, bathroom and study. Outside offers well-kept communal gardens, garage and car park.

Being Located in the sought after quiet residential BH10 area, close to St marks and Hill view Primary Schools with local amenities, public and grammar schools nearby along with easy access in and out of Bournemouth. The apartment is perfect as a ready to go BUY-TO-LET or as the ideal FIRST TIME BUY.



Energy Efficiency Rating		Environmental Impact (CO ₂) Rating	
Band	Score	Band	Score
A	92-100	A	1-10
B	81-91	B	11-20
C	69-80	C	21-30
D	55-68	D	31-40
E	39-54	E	41-50
F	29-38	F	51-60
G	1-28	G	61-70

England & Wales